

UNDEREMPLOYED WORKERS AUSTRALIA

EMBARGO: 11.30AM (CANBERRA TIME) TUES 26 JUNE 2001

CONTENTS

	<i>page</i>
Notes	2
Conceptual framework	3
Summary of findings	5

TABLES

List of tables	8
Civilian population	9
Employed persons	9
Usually work part-time and want more hours	10
Looking for or available to start work with more hours	17
Populations	22

ADDITIONAL INFORMATION

Explanatory Notes	23
Appendix 1: Populations and data item list	26
Appendix 2: Supplementary Surveys	30
Technical Note	31
Glossary	35

INQUIRIES

- For further information about these and related statistics, contact the National Information Service on 1300 135 070 or Annette Milnes on Canberra 02 6252 7240.



UNDEREMPLOYED WORKERS AUSTRALIA

EMBARGO: 11.30AM (CANBERRA TIME) TUES 26 JUNE 2001

CONTENTS

	<i>page</i>
Notes	2
Conceptual framework	3
Summary of findings	5

TABLES

List of tables	8
Civilian population	9
Employed persons	9
Usually work part-time and want more hours	10
Looking for or available to start work with more hours	17
Populations	22

ADDITIONAL INFORMATION

Explanatory Notes	23
Appendix 1: Populations and data item list	26
Appendix 2: Supplementary Surveys	30
Technical Note	31
Glossary	35

- For further information about these and related statistics, contact the National Information Service on 1300 135 070 or Annette Milnes on Canberra 02 6252 7240.

6265.0

UNDEREMPLOYED WORKERS *AUSTRALIA*

UPDATED:FRIDAY 11 OCT 2002

2000

(revised figures)

Australian Bureau of Statistics

Cat. No. 6265.0 Underemployed Workers - Companion data (revised figures)

Table 1. LABOUR FORCE STATUS - Australia - 2000

	Males	Females	Persons
	'000	'000	'000
Persons 15 years and over	7472.8	7703.1	15175.9
Not in the labour force	2003.1	3403.2	5406.3
In the labour force	5469.7	4299.9	9769.6
Unemployed	369.8	261.7	631.4
Employed persons	5099.9	4038.3	9138.2

© Commonwealth of Australia, 2002

LEVELS AT WHICH ESTIMATES HAVE RELATIVE STANDARD ERRORS OF 25% AND 50% (a)

	NSW no.	Vic. no.	Qld. no.	SA no.	WA no.	Tas. no.	NT no.	ACT no.	Aust. no.
25% RSE									
Mean duration of current period of insufficient work	13,670	12,313	8,250	5,822	6,251	2,939	3,515	1,109	14,331
Median duration of current period of insufficient work	24,238	18,286	15,682	8,585	10,261	4,047	4,060	3,594	21,497
Mean preferred number of extra hours	3,889	3,473	3,134	1,966	2,937	1,004	638	455	3,021
All other estimates	6,245	4,689	4,100	2,469	2,937	1,206	1,199	1,145	4,574
50% RSE									
Mean duration of current period of insufficient work	3,338	3,255	2,374	1,790	1,883	918	1,127	392	3,116
Median duration of current period of insufficient work	6,789	5,192	4,582	2,647	3,153	1,270	1,305	1,219	5,149
Mean preferred number of extra hours	592	677	881	599	857	308	198	165	368
All other estimates	1,182	996	1,160	754	857	371	377	404	682

(a) Refers to the number of persons contributing to the estimate.

Australian Bureau of Statistics

Cat. No. 6265.0 Underemployed Workers - Companion data (revised figures)

Table 2. UNDEREMPLOYMENT STATUS - Australia - 2000

	Males	Females	Persons
	'000	'000	'000
Employed persons	5099.9	4038.3	9138.2
Fully employed workers	4875.9	3734.9	8610.7
Full-time worker	4383.4	2266.7	6650.1
Part-time worker	492.4	1468.2	1960.6
Usually work full-time but worked part-time	43.9	8.6	52.6
Usually work part-time and wants more hours	180.1	294.8	474.8
Usually work part-time and wants more part-time hours	45.0	135.8	180.8
Usually work part-time and want full-time hours	135.0	159.0	294.0

© Commonwealth of Australia, 2002

Australian Bureau of Statistics

Cat. No. 6265.0 Underemployed Workers - Companion data (revised figures)

**Table 3. EMPLOYED PERSONS, who usually work part-time and want more hours -
Australia - 2000**

	NUMBER			PROPORTION OF LABOUR FORCE . . .		
	Males	Females	Persons	Males	Females	Persons
	'000	'000	'000	%	%	%
All ages	180.1	294.8	474.8	3.3	6.9	4.9

© Commonwealth of Australia, 2002

Australian Bureau of Statistics

Cat. No. 6265.0 Underemployed Workers - Companion data (revised figures)

Table 4. EMPLOYED PERSONS, who usually work part-time and want more hours - Australia - 2000

	Males	Females	Persons
	'000	'000	'000
Had been looking for work with more hours	113.0	146.8	259.8
Looking and available to start	111.2	142.1	253.3
Looking and available last week	95.7	109.3	205.1
Looking and not available last week but within four weeks	15.5	32.7	48.2
Looking and not available to start	1.8	4.7	6.5
Had not been looking for work with more hours	67.1	148.0	215.0
Not looking and available to start	53.0	115.4	168.5
Not looking and available last week	39.1	75.4	114.4
Not looking and not available last week but within four weeks	13.9	40.1	54.0
Not looking and not available to start	14.0	32.6	46.6
Total	180.1	294.8	474.8

© Commonwealth of Australia, 2002

Australian Bureau of Statistics

Cat. No. 6265.0 Underemployed Workers - Companion data (revised figures)

Table 5. USUALLY WORK PART-TIME AND WANT MORE HOURS - Australia - 2000

	LOOKING OR AVAILABLE LAST WEEK						
	Looking and available	Looking but not available (a)	Not looking but available	Total	Not looking and not available last week (b)	Total	
MALES							
Age group (years)							
15-19	'000	20.0	4.7	8.4	33.1	6.0	39.1
20-24	'000	17.3	4.8	9.1	31.2	2.7	33.9
25-34	'000	21.8	0.7	5.6	28.1	4.2	32.4
35-44	'000	13.3	3.5	5.3	22.1	5.7	27.8
45-54	'000	14.3	3.4	5.6	23.2	6.4	29.5
55 and over	'000	9.1	0.2	5.1	14.4	2.9	17.4
Relationship in household							
Family member	'000	73.5	11.9	33.8	119.2	20.5	139.7
Husband or wife	'000	36.9	4.0	16.4	57.3	10.4	67.6
Lone parent	'000	2.0	1.0	1.6	4.6	1.2	5.7
Dependent student	'000	7.3	1.5	5.7	14.5	4.0	18.5
Non-dependent child	'000	25.4	5.1	9.2	39.6	4.5	44.1
Other family person	'000	1.9	0.4	0.9	3.2	0.5	3.7
Non-family member	'000	17.2	3.7	4.9	25.8	6.7	32.5
Family status not determined	'000	5.1	1.6	0.4	7.1	0.8	7.9
Preferred total number of hours							
Less than 35	'000	18.6	2.6	15.6	36.8	8.2	45.0
35 or more	'000	77.1	14.7	23.5	115.3	19.7	135.0
Preferred number of extra hours							
Less than 10	'000	11.7	2.5	10.8	25.0	10.6	35.6
10-19	'000	36.8	9.1	19.4	65.4	11.6	77.0
20-29	'000	30.7	2.3	6.6	39.6	4.9	44.5
30 or more	'000	16.5	3.4	2.2	22.1	0.9	23.0
Whether would prefer to change employer to work more hours							
Would prefer to change employer	'000	31.0	6.5	10.3	47.8	4.4	52.2
Would prefer not to change employer	'000	34.0	6.7	21.1	61.7	15.8	77.5
No preference	'000	30.8	4.1	7.7	42.6	7.8	50.4
Whether would prefer to change occupation to work more hours							
Would prefer to change occupation	'000	39.9	8.6	14.1	62.6	7.8	70.4
Would prefer not to change occupation	'000	31.7	6.1	17.4	55.1	16.3	71.4
No preference	'000	24.2	2.6	7.6	34.4	3.9	38.3
Duration of current period of insufficient work (weeks)							
1-3	'000	11.8	2.1	2.1	15.9	4.6	20.5
4-12	'000	22.8	3.4	8.2	34.4	5.1	39.5
13-51	'000	30.1	6.9	15.3	52.4	10.7	63.1
52 and over	'000	31.0	4.9	13.5	49.5	7.5	56.9
Total	'000	95.7	17.3	39.1	152.1	28.0	180.1
Mean duration of current period of insufficient work	Weeks	59.4	53.4	53.1	57.1	48.9	55.8
Median duration of current period of insufficient work	Weeks	26	30	27	26	22	26
FEMALES							
Age group (years)							
15-19	'000	20.6	3.6	9.6	33.8	7.8	41.5
20-24	'000	19.5	8.0	11.2	38.7	9.6	48.3
25-34	'000	22.6	7.0	11.9	41.6	12.5	54.1
35-44	'000	22.5	8.9	20.1	51.5	22.1	73.6
45-54	'000	20.7	8.2	18.9	47.7	14.2	62.0
55 and over	'000	3.5	1.7	3.6	8.9	6.4	15.3
Relationship in household							
Family member	'000	88.5	28.2	63.9	180.6	60.1	240.8
Husband or wife	'000	45.4	15.1	41.6	102.1	32.5	134.6
Lone parent	'000	12.8	4.2	9.6	26.6	14.2	40.9
Dependent student	'000	9.0	2.4	6.0	17.4	5.6	23.0

Non-dependent child	'000	17.5	5.3	6.5	29.4	7.4	36.8
Other family person	'000	3.7	1.3	0.2	5.1	0.3	5.5
Non-family member	'000	18.5	7.4	10.6	36.5	10.3	46.8
Family status not determined	'000	2.4	1.8	0.9	5.1	2.1	7.2
Preferred total number of hours							
Less than 35	'000	45.7	14.5	41.1	101.3	34.5	135.8
35 or more	'000	63.6	22.9	34.2	120.8	38.2	159.0
Preferred number of extra hours							
Less than 10	'000	23.4	9.6	29.6	62.6	28.8	91.4
10-19	'000	49.4	17.8	34.0	101.2	33.0	134.2
20-29	'000	20.3	8.2	8.8	37.3	7.4	44.8
30 or more	'000	16.2	1.8	3.0	21.0	3.4	24.4
Whether would prefer to change employer to work more hours							
Would prefer to change employer	'000	37.3	16.5	22.0	75.7	13.4	89.1
Would prefer not to change employer	'000	45.7	13.7	44.0	103.3	48.1	151.4
No preference	'000	26.4	7.3	9.4	43.1	11.2	54.3
Whether would prefer to change occupation to work more hours							
Would prefer to change occupation	'000	49.7	17.5	29.9	97.1	23.5	120.6
Would prefer not to change occupation	'000	39.2	15.3	33.6	88.1	40.8	129.0
No preference	'000	20.4	4.6	11.9	36.9	8.3	45.2
Duration of current period of insufficient work (weeks)							
1-3	'000	9.4	2.5	6.6	18.5	6.9	25.4
4-12	'000	26.3	9.6	17.9	53.8	14.7	68.4
13-51	'000	37.9	14.5	22.4	74.8	26.0	100.7
52 and over	'000	35.8	10.9	28.5	75.1	25.1	100.2
Total	'000	109.3	37.4	75.4	222.1	72.6	294.8
Mean duration of current period of insufficient work	Weeks	58.1	47.2	59.0	56.6	70.8	60.1
Median duration of current period of insufficient work	Weeks	26	26	27	26	27	27

PERSONS

Age group (years)							
15-19	'000	40.6	8.3	18.0	66.9	13.8	80.6
20-24	'000	36.8	12.8	20.3	69.9	12.3	82.2
25-34	'000	44.4	7.7	17.6	69.7	16.8	86.5
35-44	'000	35.8	12.5	25.3	73.6	27.8	101.4
45-54	'000	34.9	11.6	24.4	70.9	20.6	91.5
55 and over	'000	12.6	1.9	8.7	23.3	9.4	32.7
Relationship in household							
Family member	'000	162.0	40.2	97.6	299.8	80.7	380.5
Husband or wife	'000	82.3	19.0	58.0	159.3	42.9	202.2
Lone parent	'000	14.9	5.1	11.2	31.2	15.4	46.6
Dependent student	'000	16.3	3.9	11.7	31.9	9.6	41.5
Non-dependent child	'000	42.9	10.4	15.7	69.0	11.9	80.9
Other family person	'000	5.6	1.7	1.0	8.3	0.9	9.2
Non-family member	'000	35.6	11.1	15.5	62.2	17.0	79.3
Family status not determined	'000	7.5	3.5	1.3	12.2	2.9	15.1
Preferred total number of hours							
Less than 35	'000	64.3	17.1	56.7	138.1	42.7	180.8
35 or more	'000	140.7	37.6	57.8	236.1	57.9	294.0
Preferred number of extra hours							
Less than 10	'000	35.1	12.1	40.4	87.7	39.4	127.1
10-19	'000	86.2	26.9	53.4	166.5	44.6	211.1
20-29	'000	51.0	10.5	15.4	76.9	12.3	89.3
30 or more	'000	32.7	5.2	5.2	43.1	4.2	47.4
Whether would prefer to change employer to work more hours							
Would prefer to change employer	'000	68.2	23.0	32.2	123.5	17.8	141.3
Would prefer not to change employer	'000	79.7	20.3	65.1	165.1	63.9	228.9
No preference	'000	57.2	11.4	17.1	85.7	19.0	104.6
Whether would prefer to change occupation to work more hours							
Would prefer to change occupation	'000	89.6	26.1	44.0	159.7	31.3	191.0
Would prefer not to change occupation	'000	70.9	21.4	50.9	143.2	57.1	200.3
No preference	'000	44.6	7.3	19.5	71.3	12.1	83.5
Duration of current period of insufficient work (weeks)							

1-3	'000	21.2	4.6	8.6	34.4	11.5	45.9
4-12	'000	49.1	13.0	26.0	88.1	19.8	107.9
13-51	'000	68.0	21.4	37.8	127.2	36.7	163.9
52 and over	'000	66.8	15.8	42.0	124.6	32.6	157.2
Total	'000	205.1	54.7	114.4	374.2	100.6	474.8
Mean duration of current period of insufficient work	Weeks	58.7	49.2	57.0	56.8	64.7	58.5
Median duration of current period of insufficient work	Weeks	26	26	27	26	27	26

- (a) Includes persons looking for but not available to start work with more hours last week, and persons available to start work with more hours within four weeks.
(b) Includes persons neither looking for nor available to start work with more hours last week, and persons available to start work with more hours within four weeks.

© Commonwealth of Australia, 2002

Australian Bureau of Statistics

Cat. No. 6265.0 Underemployed Workers - Companion data (revised figures)

Table 6. USUALLY WORK PART-TIME AND WANT MORE HOURS, insufficient work - Australia - 2000

DURATION OF CURRENT PERIOD OF INSUFFICIENT WORK (WEEKS)

	1-12	13-51	52 and over	Total	Mean duration	Median duration
	'000	'000	'000	'000	Weeks	Weeks
MALES						
State or territory of usual residence						
New South Wales	16.9	22.1	17.1	56.1	54.7	27
Victoria	11.0	15.8	16.5	43.3	68.2	32
Queensland	17.0	11.4	8.4	36.8	46.9	14
South Australia	5.7	4.6	7.3	17.6	62.3	37
Western Australia	6.9	5.5	3.4	15.7	34.4	16
Tasmania	1.0	2.3	3.3	6.6	76.4	44
Northern Territory(a)	0.6	0.2	0.0	0.7	9.9	5
Australian Capital Territory	0.9	1.3	1.1	3.3	47.8	21
Age group (years)						
15-19	14.5	17.5	7.0	39.1	28.7	18
20-24	11.9	12.1	9.9	33.9	41.8	27
25-34	11.2	9.5	11.7	32.4	50.7	26
35-44	10.6	7.9	9.2	27.8	83.4	26
45-54	9.2	10.5	9.9	29.5	72.0	26
55 and over	2.6	5.6	9.2	17.4	81.9	52
Birthplace and period of arrival						
Born in Australia	43.0	49.1	42.1	134.2	55.6	26
Born outside Australia	17.0	14.0	14.8	45.9	56.5	25
Arrived before 1971	1.4	3.6	5.6	10.6	81.9	52
Arrived 1971 to 1980	4.2	1.5	1.2	7.0	32.1	10
Arrived 1981 to 1990	5.0	2.7	3.9	11.6	58.3	25
Arrived 1991 to survey date	6.5	6.2	4.1	16.8	49.4	21
Born in main English-speaking countries	5.5	4.4	5.5	15.3	68.4	23
Born in other countries	11.6	9.7	9.3	30.6	50.5	25
Educational attainment						
With post-school qualifications(b)	20.5	19.8	21.5	61.8	62.6	26
Higher degree or post-graduate diploma	1.1	0.0	1.8	2.9	78.5	53
Bachelor degree	4.8	4.5	3.7	12.9	52.6	26
Undergraduate or associate diploma	3.6	1.8	4.6	10.0	94.3	27
Skilled or basic vocational qualification	11.0	13.6	11.3	35.9	56.0	26
Without post-school qualifications(c)	35.1	36.6	33.2	104.9	56.0	27
Completed highest level of secondary school	16.0	19.1	13.0	48.1	49.5	26
Did not complete highest level of secondary school	19.1	17.5	20.2	56.9	61.4	27
Still at school	4.5	6.6	2.3	13.4	23.4	21
Status in employment						
Employee	51.9	52.4	44.4	148.8	52.2	26
Employer	0.2	0.5	0.6	1.4	59.2	40
Own account worker	5.9	7.8	9.8	23.6	82.0	27
Contributing family worker	1.9	2.3	2.1	6.3	43.2	25
Total	60.0	63.1	56.9	180.1	55.8	26
FEMALES						

State or territory of usual residence						
New South Wales	20.7	32.4	28.3	81.4	62.8	26
Victoria	22.1	22.9	26.1	71.1	63.5	30
Queensland	23.4	17.7	21.3	62.4	57.4	26
South Australia	9.0	7.4	11.4	27.7	71.0	27
Western Australia	13.3	16.6	8.0	37.9	44.8	19
Tasmania	3.1	1.6	3.7	8.3	77.6	35
Northern Territory(a)	0.8	0.7	0.2	1.7	23.0	16
Australian Capital Territory	1.4	1.6	1.1	4.2	35.6	27
Age group (years)						
15-19	17.4	17.6	6.5	41.5	26.9	17
20-24	16.6	18.7	13.0	48.3	40.6	24
25-34	21.1	17.0	16.0	54.1	40.9	20
35-44	19.7	23.1	30.8	73.6	75.5	37
45-54	16.2	18.8	27.0	62.0	86.6	39
55 and over	2.8	5.6	6.9	15.3	98.0	40
Birthplace and period of arrival						
Born in Australia	75.2	77.7	75.0	227.9	58.5	26
Born outside Australia	18.6	23.0	25.2	66.9	65.4	29
Arrived before 1971	2.6	7.6	7.6	17.8	85.2	50
Arrived 1971 to 1980	4.6	4.3	4.3	13.2	65.7	32
Arrived 1981 to 1990	6.8	6.1	6.8	19.6	55.5	26
Arrived 1991 to survey date	4.6	5.0	6.6	16.2	55.2	26
Born in main English-speaking countries	8.0	10.4	8.3	26.7	58.2	27
Born in other countries	10.6	12.6	16.9	40.2	70.1	34
Educational attainment						
With post-school qualifications(b)	33.7	35.8	44.6	114.1	61.6	28
Higher degree or post-graduate diploma	2.2	1.7	2.2	6.1	39.7	32
Bachelor degree	6.1	8.0	9.6	23.7	75.9	31
Undergraduate or associate diploma	5.4	6.5	10.9	22.8	73.8	37
Skilled or basic vocational qualification	20.1	19.3	20.9	60.3	52.2	26
Without post-school qualifications(c)	55.7	60.0	54.4	170.1	61.3	26
Completed highest level of secondary school	26.1	25.3	16.2	67.6	41.1	19
Did not complete highest level of secondary school	29.6	34.7	38.2	102.5	74.7	27
Still at school	4.4	5.0	1.2	10.5	23.1	19
Status in employment						
Employee	86.0	92.8	90.7	269.4	58.5	26
Employer	0.5	0.8	1.1	2.4	170.1	33
Own account worker	4.5	5.2	6.8	16.5	78.4	37
Contributing family worker	2.9	1.9	1.6	6.4	36.5	18
Total	93.8	100.7	100.2	294.8	60.1	27

PERSONS

State or territory of usual residence						
New South Wales	37.6	54.5	45.3	137.5	59.5	26
Victoria	33.1	38.7	42.6	114.4	65.3	31
Queensland	40.3	29.1	29.8	99.2	53.5	21
South Australia	14.7	12.0	18.6	45.3	67.6	35
Western Australia	20.2	22.0	11.4	53.6	41.8	18
Tasmania	4.1	3.9	7.0	14.9	77.1	40
Northern Territory(a)	1.3	0.8	0.2	2.4	19.0	9
Australian Capital Territory	2.4	2.9	2.2	7.5	40.9	27
Age group (years)						
15-19	31.9	35.2	13.5	80.6	27.8	18
20-24	28.4	30.8	23.0	82.2	41.1	26

25-34	32.3	26.5	27.7	86.5	44.6	22
35-44	30.3	31.0	40.1	101.4	77.7	32
45-54	25.4	29.3	36.9	91.5	81.9	32
55 and over	5.4	11.2	16.1	32.7	89.4	44
Birthplace and period of arrival						
Born in Australia	118.2	126.8	117.1	362.1	57.4	26
Born outside Australia	35.6	37.1	40.0	112.7	61.8	27
Arrived before 1971	4.0	11.2	13.1	28.4	84.0	50
Arrived 1971 to 1980	8.8	5.8	5.5	20.1	54.1	15
Arrived 1981 to 1990	11.7	8.8	10.7	31.2	56.6	25
Arrived 1991 to survey date	11.1	11.2	10.7	33.0	52.3	26
Born in main English-speaking countries	13.5	14.8	13.8	42.0	61.9	26
Born in other countries	22.2	22.3	26.3	70.7	61.7	27
Educational attainment						
With post-school qualifications(b)	54.2	55.6	66.1	175.9	61.9	27
Higher degree or post-graduate diploma	3.2	1.7	4.1	9.1	52.3	42
Bachelor degree	10.8	12.5	13.3	36.6	67.7	27
Undergraduate or associate diploma	9.0	8.2	15.6	32.8	80.0	36
Skilled or basic vocational qualification	31.1	32.8	32.3	96.2	53.6	26
Without post-school qualifications(c)	90.8	96.7	87.6	275.1	59.3	26
Completed highest level of secondary school	42.1	44.4	29.2	115.7	44.6	25
Did not complete highest level of secondary school	48.8	52.2	58.4	159.4	70.0	27
Still at school	8.8	11.6	3.5	23.9	23.3	21
Status in employment						
Employee	137.9	145.2	135.1	418.3	56.3	26
Employer	0.7	1.3	1.7	3.7	129.9	40
Own account worker	10.4	13.1	16.6	40.1	80.5	33
Contributing family worker	4.8	4.3	3.7	12.7	39.8	21
Total	153.8	163.9	157.2	474.8	58.5	26

(a) Refers to mainly urban areas only.

(b) Includes nursing level unknown.

(c) Includes never attended school.

Australian Bureau of Statistics

Cat. No. 6265.0 Underemployed Workers - Companion data (revised figures)

Table 7. PERSONS LOOKING OR AVAILABLE FOR WORK WITH MORE HOURS (a) - Australia - 2000

	PREFERRED NUMBER OF EXTRA HOURS					Mean preferred number of extra hours
	Less than 10	10-19	20-29	30 or more	Total	
	'000	'000	'000	'000	'000	Hours
MALES						
Age group (years)						
15-19	8.0	14.2	9.1	4.0	35.3	16.9
20-24	5.6	14.5	7.2	5.8	33.1	18.3
25-34	5.5	11.6	10.7	2.8	30.7	18.4
35-44	3.9	11.2	5.8	3.8	24.7	17.7
45-54	4.9	11.0	6.0	4.8	26.7	18.9
55 and over	2.8	8.5	3.4	0.9	15.6	15.9
Status in employment						
Employee	26.6	62.0	32.8	16.5	138.0	17.5
Employer	0.0	0.8	0.5	0.0	1.4	16.3
Own account worker	4.1	7.0	6.1	3.3	20.4	18.1
Contributing family worker	0.0	1.2	2.8	2.3	6.3	24.6
Usual number of hours worked						
1-5	5.2	4.2	1.6	6.7	17.7	20.6
6-10	4.1	6.9	7.2	13.4	31.6	23.1
11-15	3.4	4.7	15.1	0.9	24.1	20.5
16-20	1.7	18.8	16.9	0.9	38.3	18.6
21-29	3.8	27.9	0.5	0.0	32.2	13.7
30-34	12.2	8.0	1.0	0.2	21.4	9.7
35 hours or more	0.3	0.5	0.0	0.0	0.8	11.6
Whether would move interstate if offered a suitable job						
Would move interstate	5.9	14.2	9.8	6.6	36.5	19.1
Would not move interstate	22.5	46.2	26.4	12.0	107.2	17.2
Might move interstate	1.3	8.7	5.0	2.2	17.2	18.7
Don't know	0.9	1.9	1.0	1.3	5.2	19.5
Whether would move intrastate if offered a suitable job						
Would move intrastate	5.9	20.1	13.6	9.3	48.9	19.7
Would not move intrastate	20.4	40.6	22.1	8.3	91.4	16.6
Might move intrastate	3.8	9.6	5.7	3.7	22.9	18.2
Don't know	0.6	0.6	0.9	0.8	2.9	21.1
Total	30.7	71.0	42.2	22.1	166.0	17.8
FEMALES						
Age group (years)						
15-19	16.0	13.1	5.0	3.1	37.3	13.4
20-24	10.3	21.3	8.3	4.4	44.3	16.1
25-34	10.0	25.4	7.2	6.6	49.2	16.5

35-44	19.8	28.9	9.7	4.3	62.7	14.5
45-54	19.1	23.6	9.0	4.1	55.7	14.4
55 and over	3.2	7.8	1.4	0.5	12.9	13.6
Status in employment						
Employee	75.6	111.7	35.0	19.5	241.8	14.6
Employer	0.3	1.5	0.4	0.0	2.2	14.8
Own account worker	1.5	5.0	4.3	2.0	12.8	18.8
Contributing family worker	1.1	2.1	0.8	1.4	5.5	18.2
Usual number of hours worked						
1-5	10.3	11.4	2.9	9.8	34.3	18.4
6-10	11.7	19.5	9.7	12.4	53.3	18.1
11-15	12.1	16.3	14.9	0.0	43.3	15.7
16-20	12.0	24.2	11.3	0.4	48.0	14.7
21-29	14.5	40.7	1.6	0.0	56.7	12.2
30-34	17.1	7.9	0.0	0.3	25.3	8.8
35 hours or more	0.8	0.2	0.3	0.0	1.3	10.1
Whether would move interstate if offered a suitable job						
Would move interstate	8.1	18.5	9.6	4.8	41.1	17.2
Would not move interstate	67.5	90.1	26.4	14.7	198.7	14.1
Might move interstate	2.7	7.9	4.6	1.7	16.9	17.7
Don't know	0.2	3.6	0.0	1.7	5.5	18.8
Whether would move intrastate if offered a suitable job						
Would move intrastate	13.6	28.1	11.4	7.2	60.3	16.5
Would not move intrastate	59.5	75.3	22.2	11.8	168.8	13.9
Might move intrastate	5.4	15.8	6.5	2.9	30.6	16.7
Don't know	0.0	0.9	0.6	1.0	2.5	22.7
Total	78.5	120.2	40.6	22.9	262.2	14.9

PERSONS

Age group (years)						
15-19	24.1	27.4	14.1	7.1	72.7	15.1
20-24	15.9	35.8	15.6	10.2	77.4	17.0
25-34	15.5	37.0	17.9	9.4	79.8	17.3
35-44	23.7	40.1	15.5	8.1	87.4	15.4
45-54	24.0	34.6	15.0	8.8	82.4	15.9
55 and over	6.0	16.3	4.8	1.4	28.5	14.9
Status in employment						
Employee	102.2	173.7	67.9	36.0	379.8	15.7
Employer	0.3	2.3	1.0	0.0	3.5	15.4
Own account worker	5.5	12.0	10.4	5.3	33.1	18.3
Contributing family worker	1.1	3.3	3.6	3.7	11.8	21.6
Usual number of hours worked						
1-5	15.4	15.6	4.4	16.5	52.0	19.2
6-10	15.8	26.4	16.9	25.8	84.9	20.0
11-15	15.6	21.0	30.0	0.9	67.4	17.4
16-20	13.8	43.1	28.2	1.3	86.3	16.5
21-29	18.2	68.6	2.1	0.0	89.0	12.8
30-34	29.2	15.9	1.0	0.5	46.6	9.2
35 hours or more	1.1	0.7	0.3	0.0	2.0	10.7

Whether would move interstate if offered a suitable job						
Would move interstate	14.0	32.7	19.4	11.4	77.6	18.1
Would not move interstate	90.0	136.4	52.8	26.6	305.9	15.2
Might move interstate	4.0	16.6	9.6	3.9	34.1	18.2
Don't know	1.1	5.5	1.0	3.0	10.7	19.1
Whether would move intrastate if offered a suitable job						
Would move intrastate	19.5	48.3	24.9	16.5	109.2	17.9
Would not move intrastate	79.8	115.9	44.3	20.2	260.2	14.9
Might move intrastate	9.2	25.5	12.2	6.6	53.5	17.3
Don't know	0.6	1.5	1.5	1.8	5.4	21.9
Total	109.2	191.2	82.9	45.0	428.2	16.0

(a) Availability refers to last week or within four weeks.

© Commonwealth of Australia, 2002

Australian Bureau of Statistics

Cat. No. 6265.0 Underemployed Workers - Companion data (revised figures)

Table 8. PERSONS LOOKING OR AVAILABLE FOR WORK WITH MORE HOURS (a) - Australia - 2000

	NUMBER			MEAN PREFERRED NUMBER OF EXTRA HOURS		
	Males	Females	Persons	Males	Females	Persons
	'000	'000	'000	Hours	Hours	Hours
Main difficulty finding work						
Had been looking for work with more hours	113.0	146.8	259.8	19.4	16.5	17.8
Own ill health or disability	4.8	3.7	8.5	20.5	20.3	20.4
Considered too young or too old by employers	7.8	13.6	21.4	19.3	17.4	18.1
Unsuitable hours	5.5	10.1	15.6	12.1	12.3	12.2
Too far to travel/transport problems	5.4	8.1	13.6	23.1	16.1	18.9
Lacked necessary skills or education	9.2	11.2	20.4	22.5	19.4	20.8
Language difficulties	2.0	2.6	4.6	22.9	23.9	23.5
Insufficient work experience	7.9	14.6	22.5	20.5	18.0	18.9
No vacancies in line of work	29.8	23.1	52.9	19.2	17.1	18.3
Too many applicants for available jobs	10.3	10.6	20.9	17.5	15.1	16.3
No vacancies at all	9.9	14.5	24.3	18.2	18.6	18.4
Difficulties with ethnic background	0.7	0.8	1.5	15.5	10.3	12.7
Difficulties with childcare	0.2	1.5	1.7	10.5	20.4	19.3
Other family responsibilities	1.9	4.9	6.8	16.8	13.0	14.1
Other difficulties	9.6	15.2	24.7	23.9	14.3	18.0
No difficulties reported	8.0	12.3	20.3	16.8	14.4	15.3
Had not been looking for work with more hours	53.0	115.4	168.5	14.4	12.9	13.3
Total	166.0	262.2	428.2	17.8	14.9	16.0

(a) Availability refers to last week or within four weeks.

Australian Bureau of Statistics

Cat. No. 6265.0 Underemployed Workers - Companion data (revised figures)

Table 9. PERSONS LOOKING OR AVAILABLE FOR WORK WITH MORE HOURS (a) - Australia - 2000

PREFERRED NUMBER OF EXTRA HOURS

	Less than 10	10-19	20-29	30 or more	Total	Mean preferred number of extra hours
All steps taken to find work in the last four weeks	'000	'000	'000	'000	'000	Hours
MALES						
Registered with Centrelink for job search assistance	2.2	15.7	17.3	11.6	46.8	22.5
Contacted prospective employers	11.3	36.0	30.3	17.9	95.5	20.0
Checked Centrelink touchscreens	1.4	8.2	11.6	5.5	26.7	22.3
Checked factory noticeboards	0.0	3.2	2.6	1.9	7.7	23.4
Checked or registered with any other employment agency	1.3	9.1	6.6	8.5	25.6	22.4
Looked in newspapers	7.4	29.2	20.3	15.2	72.2	20.3
Searched Internet sites	1.8	6.9	3.8	4.8	17.3	21.0
Answered a newspaper advertisement for a job	1.6	10.4	8.5	5.6	26.0	21.2
Advertised or tendered for work	1.0	4.1	2.7	2.2	10.0	20.1
Contacted friends or relatives	3.3	13.9	11.0	7.9	36.2	21.0
Other steps taken to look for work	1.3	6.5	4.8	1.8	14.3	19.3
Had not been looking for work with more hours	16.5	25.1	9.2	2.2	53.0	14.4
FEMALES						
Registered with Centrelink for job search assistance	3.7	15.1	14.0	7.1	39.9	20.6
Contacted prospective employers	22.4	52.8	22.9	16.5	114.7	17.4
Checked Centrelink touchscreens	2.7	10.3	7.4	5.5	25.9	20.4
Checked factory noticeboards	0.9	3.0	1.1	1.0	6.0	18.5
Checked or registered with any other employment agency	5.0	13.1	7.1	5.4	30.6	18.8
Looked in newspapers	19.6	45.3	19.6	15.3	99.8	17.4
Searched Internet sites	3.4	6.6	2.9	2.4	15.3	17.3
Answered a newspaper advertisement for a job	5.8	15.6	8.6	5.8	35.8	18.2
Advertised or tendered for work	0.9	4.9	2.6	0.6	8.9	16.7
Contacted friends or relatives	6.9	19.3	10.0	6.8	43.0	18.1
Other steps taken to look for work	4.3	7.9	5.0	1.6	18.7	16.5
Had not been looking for work with more hours	45.4	53.0	12.1	4.9	115.4	12.9
PERSONS						
Registered with Centrelink for job search assistance	5.9	30.8	31.4	18.7	86.8	21.6
Contacted prospective employers	33.7	88.8	53.3	34.5	210.2	18.6
Checked Centrelink touchscreens	4.1	18.5	19.0	11.0	52.6	21.4
Checked factory noticeboards	0.9	6.3	3.7	2.9	13.7	21.3
Checked or registered with any other employment agency	6.3	22.1	13.8	13.9	56.2	20.4
Looked in newspapers	27.0	74.5	39.9	30.6	171.9	18.6
Searched Internet sites	5.1	13.5	6.7	7.2	32.6	19.3
Answered a newspaper advertisement for a job	7.4	26.0	17.1	11.3	61.8	19.5
Advertised or tendered for work	1.9	9.0	5.3	2.8	19.0	18.5
Contacted friends or relatives	10.2	33.3	21.0	14.7	79.2	19.4
Other steps taken to look for work	5.5	14.4	9.7	3.4	33.1	17.7
Had not been looking for work with more hours	61.9	78.1	21.3	7.1	168.5	13.3

(a) Availability refers to last week or within four weeks.

Australian Bureau of Statistics

Cat. No. 6265.0 Underemployed Workers - Companion data (revised figures)

Table 10. POPULATIONS BY STATE OR TERRITORY OF USUAL RESIDENCE - 2000

	NSW	Vic.	Qld	SA	WA	Tas.	NT(a)	ACT	Aust.
	'000	'000	'000	'000	'000	'000	'000	'000	'000
MALES									
Population 1									
Persons aged 15 and over	2537.0	1873.9	1376.2	588.9	737.8	180.6	59.3	119.0	7472.8
Population 2									
Employed persons	1733.9	1285.6	939.1	380.8	515.4	110.4	44.1	90.4	5099.9
Population 3									
Fully employed workers	1665.3	1229.3	894.1	360.3	495.8	102.2	42.5	86.4	4875.9
Population 4									
Part-time workers who want more hours	56.1	43.3	36.8	17.6	15.7	6.6	0.7	3.3	180.1
Population 5									
Employed persons who usually work part-time and want more hours who had been looking for work or were available to start such work last week or within four weeks	50.1	40.7	35.2	16.5	13.9	6.1	0.6	2.9	166.0
FEMALES									
Population 1									
Persons aged 15 and over	2617.7	1952.6	1409.3	615.4	739.6	190.6	53.5	124.3	7703.1
Population 2									
Employed persons	1354.0	1018.3	747.4	301.6	411.1	88.2	36.1	81.6	4038.3
Population 3									
Fully employed workers	1271.1	944.2	683.8	272.8	371.7	79.5	34.5	77.4	3734.9
Population 4									
Part-time workers who want more hours	81.4	71.1	62.4	27.7	37.9	8.3	1.7	4.2	294.8
Population 5									
Employed persons who usually work part-time and want more hours who had been looking for work or were available to start such work last week or within four weeks	70.2	62.7	56.8	25.1	34.7	7.6	1.5	3.5	262.2
PERSONS									
Population 1									
Persons aged 15 and over	5154.7	3826.5	2785.5	1204.3	1477.4	371.2	112.8	243.4	15175.9
Population 2									
Employed persons	3088.0	2303.9	1686.5	682.4	926.5	198.6	80.2	172.0	9138.2
Population 3									
Fully employed workers	2936.4	2173.5	1577.9	633.2	867.5	181.6	76.9	163.8	8610.7
Population 4									
Part-time workers who want more hours	137.5	114.4	99.2	45.3	53.6	14.9	2.4	7.5	474.8
Population 5									
Employed persons who usually work part-time and want more hours who had been looking for work or were available to start such work last week or within four weeks	120.2	103.4	92.1	41.6	48.6	13.7	2.1	6.5	428.2

(a) Refers to mainly urban areas only.

© Commonwealth of Australia, 2002

ABOUT THIS PUBLICATION

This publication presents information about underemployed workers. The number of underemployed workers supplements other measures of labour market slack such as the number of unemployed persons and discouraged jobseekers. It also highlights the aspirations of those workers seeking adequate work and greater earnings.

Underemployment can be considered in two forms.

- Time-related underemployment, which reflects an insufficient volume of work.
- Inadequate employment situations, which reflects an insufficient use of skills and experience or low productivity.

The information presented in this publication relates only to time-related underemployment.

The term underemployment in this publication is a generic term used to refer to a range of situations of time-related underemployment. The conceptual framework identifies various categories of underemployed workers.

ABOUT THIS SURVEY

Statistics in this publication were obtained from the Underemployed Workers Survey conducted throughout Australia in September 2000 as a supplement to the Australian Bureau of Statistics (ABS) Monthly Labour Force Survey.

Data from the survey relate to all persons aged 15 years and over. Persons who worked less than 35 hours in the week prior to the survey and who would have preferred to work more hours were asked about whether they were looking for work with more hours, whether they were available to start work with more hours, and their experience in looking for work with more hours. Other information sought included the duration of the current period of insufficient work, and the number of extra hours preferred.



ABBREVIATIONS

- ABS Australian Bureau of Statistics
- ABSCQ Australian Bureau of Statistics Classification of Qualifications
- ICLS International Conference of Labour Statisticians
- ILO International Labour Organisation
- LFS Labour Force Survey
- RSE Relative standard error
- SE Standard error

Dennis Trewin
Australian Statistician

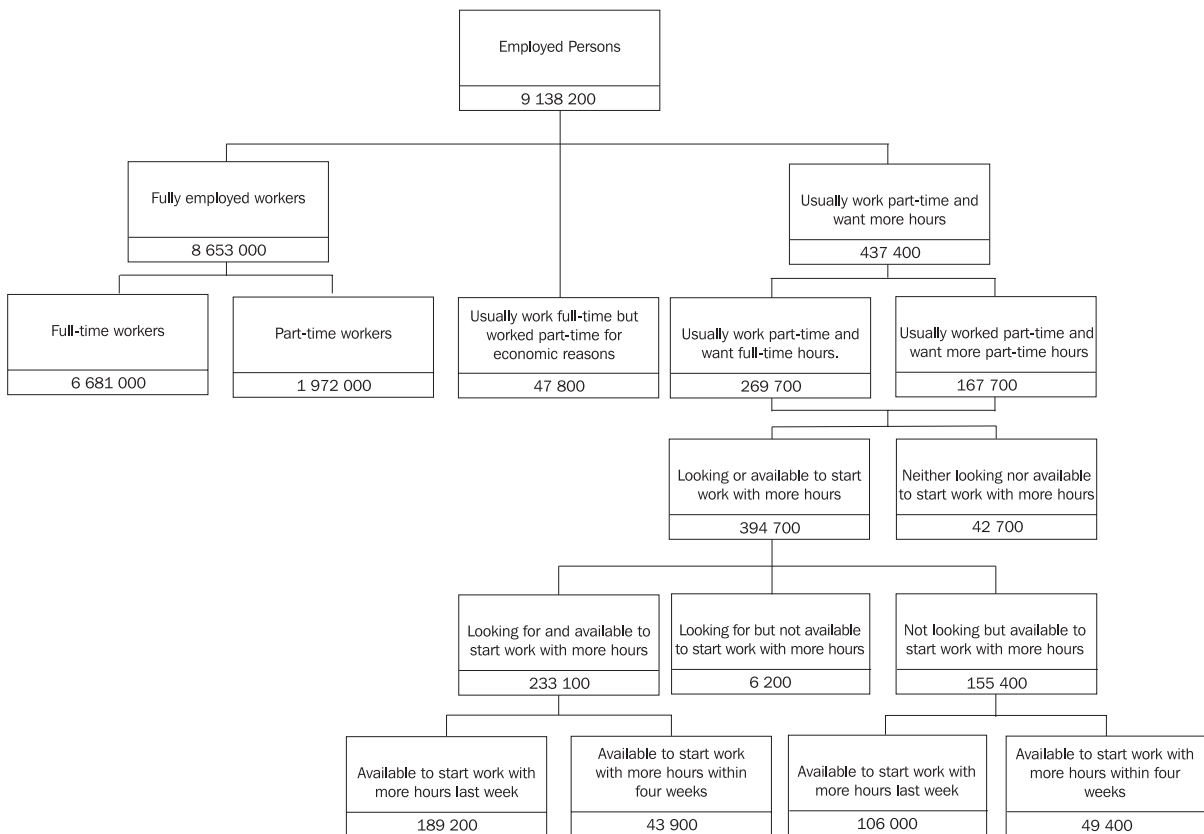
CONCEPTUAL FRAMEWORK

CONCEPTUAL FRAMEWORK

The conceptual framework within which underemployed workers are classified is based on separating employed persons into three mutually exclusive groups:

- fully employed workers;
- workers who usually work part-time and want more hours; and
- workers who usually work full-time but worked part-time hours in the reference week due to economic reasons (stood down, short time or insufficient work).

Fully employed workers comprise all full-time workers, including persons who usually work part-time but worked 35 hours or more in the reference week, and all part-time workers who do not want additional hours of work.



DEFINITIONS OF UNDEREMPLOYMENT

The International Labour Organisation (ILO) definition of underemployment was reviewed by the 16th International Conference of Labour Statisticians (ICLS) in 1998. The 16th ICLS introduced the term 'time-related' underemployment which occurs when the hours of work of an employed person are insufficient in relation to an alternative employment situation in which the person is willing and available to engage. The concept of time-related underemployment is closely related to the 'visible' underemployment used in previous recommendations (see below).

The 16th ICLS also identified inadequate employment situations, which are situations in the workplace that reduce the capacities and wellbeing of workers as compared to an alternative situation. Inadequate employment situations have not been addressed by the Underemployed Workers Survey. This concept is closely related to the concept of 'invisible' underemployment (see below).

CONCEPTUAL FRAMEWORK *continued*

DEFINITIONS OF UNDEREMPLOYMENT *continued*

The 16th ICLS defined time-related underemployment as occurring when the following three criteria are met in the reference period used to define employment:

- willing to work additional hours. Those who have actively sought to work additional hours should be separated from those who have not;
- available to work additional hours, within a specified subsequent period; and
- worked less than a threshold relating to working time. This threshold is chosen according to national circumstances, which for Australia is 35 hours in the reference week.

Prior to the 16th ICLS, the ILO recognised underemployment in two forms:

- visible underemployment, reflecting an insufficient volume of work (i.e. the hours worked); and
- invisible underemployment, reflecting an insufficient use of skills and experience or low productivity.

Visible underemployment was based on three criteria:

- working less than normal duration;
- doing so on an involuntary basis; and
- seeking or being available for additional work during the reference week.

The information collected in the Underemployed Workers Survey is compatible with the new concept of time-related underemployment, as well as the previous concept of visible underemployment.

DESCRIPTION OF THE FRAMEWORK

Employed persons who usually work part-time and want more hours can be split into two groups: those who want to work full-time hours; and those who want to work more part-time hours.

Further classification of employed persons who usually work part-time and want more hours is based on whether they were looking for and/or available to start work with more hours. These workers are further separated on the basis of whether they had looked for extra work (during the four weeks prior to the survey) and whether they were available to start extra work.

The criterion of availability to start work with more hours in the reference week was introduced in 1994 to more closely align the survey with the criteria for unemployment. The underemployed group satisfying the criteria which most closely align with the ABS definition of unemployment comprises those who have actively looked for work in the four weeks prior to the survey and were available to start work in the reference week.

Persons who usually work full-time, but worked part-time for economic reasons, are separately identified in the underemployment framework. These people worked less than 35 hours in the reference week due to being stood down or insufficient work being available. For these people it is assumed that they wanted to work full-time in the reference week and would have been available to do so.

SUMMARY OF FINDINGS

OVERVIEW

There were 9,138,200 employed persons aged 15 years and over in September 2000. Of these:

- 437,400 (5%) usually worked part-time and wanted to work more hours.
- 47,800 (0.5%) usually worked full-time but worked part-time hours in the reference week due to economic reasons (being stood down, on short time, or having insufficient work).

PART-TIME WORKERS WHO WANT MORE HOURS

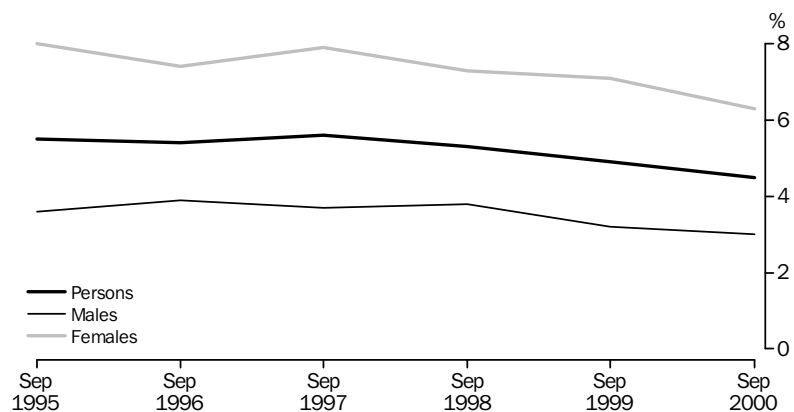
The number of persons working part-time who wanted more hours peaked at 515,500 persons in September 1997.

Between September 1999 and September 2000, the number of people working part-time and wanting more hours decreased by 7%. The number of males wanting more hours decreased by 4% during this period. Total employment increased by 3% over the same period.

In September 2000, there were 2,409,400 part-time workers. Of these, 18% wanted to work more hours. This proportion was higher for males (25%) than for females (15%). A similar pattern occurred in previous years.

Persons working part-time and wanting more hours made up 4% of the labour force in September 2000. This is a reduction of 0.5 percentage points since September 1999.

PROPORTION OF THE LABOUR FORCE



There were 189,200 part-time workers looking for work with more hours who were available to start work in the week before the survey. This is the group of underemployed workers which most closely aligns with criteria applied in the ABS definition of unemployment. Females comprised just over half of these workers (53%).

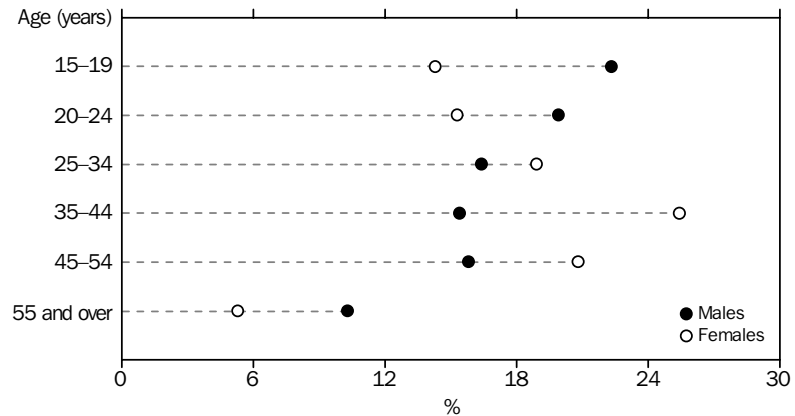
Characteristics of part-time workers who want more hours

There were 437,400 persons who worked part-time and wanted more hours in September 2000. As in previous years, the majority (62%) were female, and the majority wanted to work full-time (62%). Of those who wanted to work more hours, 75% of males wanted full-time work compared to 54% of females. One-third (34%) of all persons working part-time and wanting to work more hours were under 25 years of age.

SUMMARY OF FINDINGS *continued*

Characteristics of part-time workers who want more hours continued

AGE DISTRIBUTION OF PART-TIME WORKERS WHO WANT MORE HOURS



The proportion of male and female part-time workers wanting more hours varied according to age. Twenty-two percent of males working part-time and wanting more hours were aged 15–19 years, compared with 14% of females. A further 16% of males were aged 25–34 years, compared with 19% of females. The gap then widened considerably for the 35–44 years age group, with 15% of males in this age range, compared with 25% of females.

Duration of insufficient work

The median duration of the current period of insufficient work for people who worked part-time and wanted to work more hours was 26 weeks for males and 27 weeks for females.

Available to start extra hours last week

Of those persons working part-time who wanted to work more hours, 79% (345,300) had looked for extra work in the four weeks prior to the survey, or were available to start extra hours in the reference week. The remaining 21% (92,100 people) were not looking for work with more hours and were not available in the reference week. Of these, 49,400 were available within the next four weeks

LOOKING FOR OR AVAILABLE TO START WORK

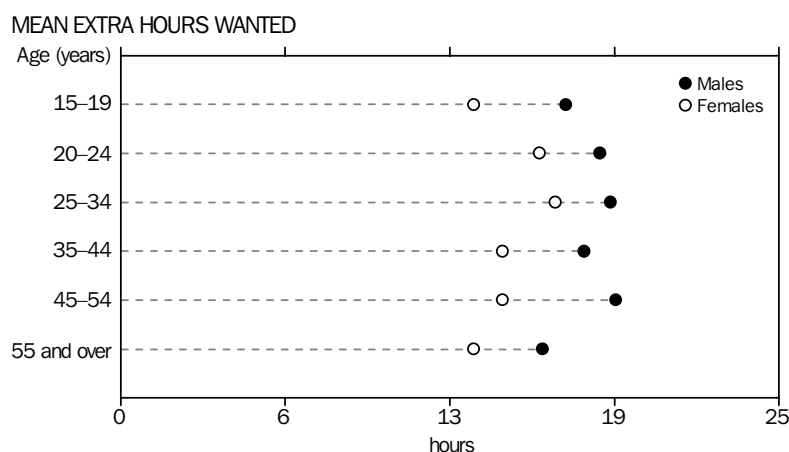
There were 394,700 part-time workers who were looking for or available to start work with more hours. This number has decreased 8% from September 1999. More than half of these people were female (61%) in September 2000.

Extra hours wanted

Of those part-time workers who were looking for or available to start work with more hours, 26% wanted to work less than 10 extra hours each week, 45% wanted to work 10–19 extra hours, 19% wanted to work 20–29 extra hours, and 10% wanted to work 30 or more extra hours. The mean preferred number of extra hours each week was 16.0 hours. On average, males wanted to work more extra hours (17.8 hours) than females (14.9 hours). The mean preferred number of extra hours was highest for persons aged 25–34 years (17.3 hours) and lowest for persons aged 55 years and over (14.8 hours).

SUMMARY OF FINDINGS *continued*

Extra hours wanted continued



Of those who usually worked 10 hours or less per week, about half (53%) wanted up to 19 extra hours. Forty-two per cent of those who usually worked 11–20 hours wanted 10–19 extra hours, and 37% wanted to work 20–29 extra hours per week. Nearly all those who usually worked 21–34 hours (97%) wanted less than 20 extra hours.

Job search experience

Information on job search experience was sought from the 239,300 part-time workers who were looking for work with more hours.

The main reasons these people gave for not having found work with additional hours were 'no vacancies in line of work' (20%), 'no vacancies at all' (9%), 'insufficient work experience' (9%), and 'considered too young or too old by employers' (8%).

The steps most frequently taken to find work with more hours were 'contacted prospective employers' (81%), 'looked in newspapers' (66%), 'registered with Centrelink' (34%) and 'contacted friends or relatives' (30%).

USUALLY WORK FULL-TIME

There were 47,800 people who usually work full-time but worked part-time hours in the reference week due to economic reasons (being stood down, on short time or insufficient work). Males made up the majority of these people (83%).

The number of people who usually worked full-time but worked part-time due to economic reasons increased by 32% from September 1999, following a 16% decrease from September 1998 to September 1999.

LIST OF TABLES

page

CIVILIAN POPULATION

- 1** Labour force status, September 1998 to September 2000 9

EMPLOYED PERSONS

- 2** Underemployment status, September 1998 to September 2000 9

USUALLY WORK PART-TIME AND WANT MORE HOURS

- 3** Number and proportion of the labour force, May 1985 to September 2000 10
- 4** Usually work part-time and want more hours, September 1998 to September 2000 10
- 5** Looking for or available to start work with more hours last week, selected characteristics 11
- 6** Duration of current period of insufficient work, selected characteristics . . . 14

LOOKING FOR OR AVAILABLE TO START WORK WITH MORE HOURS LAST WEEK OR WITHIN FOUR WEEKS

- 7** Preferred number of extra hours, selected characteristics 17
- 8** Main difficulty in finding work with more hours, preferred number of extra hours 20
- 9** All steps taken to find work in the last four weeks, preferred number of extra hours 21

POPULATIONS

- 10** State or Territory of usual residence 22

1

LABOUR FORCE STATUS

	SEPTEMBER 1998		SEPTEMBER 1999		SEPTEMBER 2000		
	<i>Males</i>	<i>Females</i>	<i>Males</i>	<i>Females</i>	<i>Males</i>	<i>Females</i>	<i>Persons</i>
	'000	'000	'000	'000	'000	'000	'000
Persons 15 years and over	7 242.6	7 467.4	7 343.8	7 586.6	7 472.9	7 703.0	15 175.9
Not in the labour force	1 902.5	3 366.3	1 977.0	3 409.1	2 003.2	3 403.1	5 406.3
In the labour force	5 340.0	4 101.1	5 366.8	4 177.5	5 469.7	4 299.9	9 769.6
Unemployed	444.7	319.3	402.3	308.6	369.8	261.7	631.4
Employed persons	4 895.5	3 781.8	4 964.4	3 868.9	5 099.9	4 038.3	9 138.2

2

UNDEREMPLOYMENT STATUS

	SEPTEMBER 1998		SEPTEMBER 1999		SEPTEMBER 2000		
	<i>Males</i>	<i>Females</i>	<i>Males</i>	<i>Females</i>	<i>Males</i>	<i>Females</i>	<i>Persons</i>
	'000	'000	'000	'000	'000	'000	'000
Employed persons	4 895.5	3 781.8	4 964.4	3 868.9	5 099.9	4 038.3	9 138.2
Fully employed workers	4 660.3	3 471.3	4 763.2	3 562.6	4 893.6	3 759.3	8 653.0
Full-time worker	4 284.2	2 195.0	4 355.2	2 218.6	4 399.2	2 281.9	6 681.0
Part-time worker	376.1	1 276.3	408.0	1 344.1	494.5	1 477.5	1 972.0
Usually work full-time but worked part-time	32.9	10.0	27.7	8.5	39.6	8.2	47.8
Usually work part-time and wants more hours	202.3	300.5	173.5	297.8	166.7	270.8	437.4
Usually work part-time and wants more part-time hours	48.0	135.9	41.7	138.1	42.4	125.3	167.7
Usually work part-time and want full-time hours	154.2	164.7	131.8	159.6	124.3	145.4	269.7

3

EMPLOYED PERSONS, who usually work part-time and want more hours

	NUMBER			PROPORTION OF LABOUR FORCE		
	Males	Females	Persons	Males	Females	Persons
	'000	'000	'000	%	%	%
May						
1985	58.5	141.1	199.6	1.3	5.0	2.8
1988	72.7	163.6	236.3	1.5	5.1	3.0
1991	134.3	256.2	390.4	2.7	7.2	4.6
September						
1994	179.1	281.3	460.5	3.5	7.3	5.2
1995	188.2	311.2	499.3	3.6	8.0	5.5
1996	202.7	296.1	498.7	3.9	7.4	5.4
1997	197.0	318.5	515.5	3.7	7.9	5.6
1998	202.3	300.5	502.8	3.8	7.3	5.3
1999	173.5	297.8	471.3	3.2	7.1	4.9
2000	166.7	270.8	437.4	3.0	6.3	4.5

4

EMPLOYED PERSONS, who usually work part-time and want more hours

	SEPTEMBER 1998		SEPTEMBER 1999		SEPTEMBER 2000		
	Males	Females	Males	Females	Males	Females	Persons
	'000	'000	'000	'000	'000	'000	'000
Had been looking for work with more hours	130.2	159.7	107.4	157.9	104.6	134.7	239.3
Looking and available to start	124.2	155.6	101.6	153.3	102.8	130.3	233.1
Looking and available last week	111.4	127.5	87.7	123.7	88.3	100.8	189.2
Looking and not available last week but within four weeks	12.8	28.1	13.9	29.6	14.5	29.4	43.9
Looking and not available to start	6.0	*4.1	5.8	4.6	*1.8	*4.5	6.2
Had not been looking for work with more hours	72.1	140.8	66.1	139.8	62.1	136.0	198.1
Not looking and available to start	60.4	118.4	52.5	111.8	49.0	106.5	155.4
Not looking and available last week	48.1	81.4	40.2	72.2	36.3	69.7	106.0
Not looking and not available last week but within four weeks	12.3	37.0	12.3	39.6	12.7	36.7	49.4
Not looking and not available to start	11.7	22.4	13.6	28.0	13.1	29.6	42.7
Total	202.3	300.5	173.5	297.8	166.7	270.8	437.4

* estimate has a relative standard error of between 25% and 50% and should be used with caution

USUALLY WORK PART-TIME AND WANT MORE HOURS

LOOKING OR AVAILABLE LAST WEEK

		Looking and available	Looking but not available	Not looking but available	Total	Not looking and not available last week	Total
MALES							
Age group (years)							
15-19	'000	19.0	*4.4	7.8	31.2	5.8	37.1
20-24	'000	17.0	4.6	8.8	30.4	*2.7	33.1
25-34	'000	18.5	**0.6	4.8	23.9	*3.5	27.3
35-44	'000	12.0	*3.3	5.1	20.3	5.4	25.7
45-54	'000	12.9	*3.1	4.8	20.8	5.4	26.3
55 and over	'000	9.0	**0.2	5.0	14.2	*3.0	17.2
Relationship in household							
Family member	'000	67.6	11.3	31.1	110.1	18.7	128.8
Husband or wife	'000	33.3	*3.9	14.8	52.0	9.1	61.1
Lone parent	'000	*1.7	*0.8	*1.5	*4.0	*1.1	5.0
Dependent student	'000	6.9	*1.5	5.5	13.9	*3.8	17.7
Non-dependent child	'000	24.0	4.8	8.4	37.3	*4.2	41.5
Other family person	'000	*1.7	**0.3	*0.9	*2.9	**0.5	*3.4
Non-family member	'000	15.9	*3.5	4.8	24.2	6.3	30.5
Family status not determined	'000	4.8	*1.4	**0.4	6.6	*0.8	7.4
Preferred total number of hours							
Less than 35	'000	17.5	*2.4	14.6	34.5	7.9	42.4
35 or more	'000	70.8	13.8	21.7	106.4	17.9	124.3
Preferred number of extra hours							
Less than 10	'000	10.7	*2.3	10.2	23.1	10.0	33.1
10-19	'000	34.3	8.6	18.1	61.0	10.7	71.7
20-29	'000	28.0	*2.2	6.3	36.5	*4.4	40.9
30 or more	'000	15.4	*3.1	*1.8	20.3	*0.7	21.0
Whether would prefer to change employer to work more hours							
Would prefer to change employer	'000	28.8	6.0	9.8	44.6	*4.2	48.9
Would prefer not to change employer	'000	31.1	6.3	19.4	56.8	14.2	71.0
No preference	'000	28.4	*4.0	7.1	39.4	7.3	46.8
Whether would prefer to change occupation to work more hours							
Would prefer to change occupation	'000	37.0	7.9	13.4	58.3	7.5	65.8
Would prefer not to change occupation	'000	29.1	5.8	15.7	50.7	14.7	65.4
No preference	'000	22.2	*2.5	7.2	31.9	*3.6	35.5
Duration of current period of insufficient work (weeks)							
1-3	'000	11.1	*1.8	*2.2	15.1	*4.4	19.5
4-12	'000	21.1	*3.3	7.7	32.1	4.8	36.9
13-51	'000	27.9	6.6	14.0	48.5	9.6	58.1
52 and over	'000	28.3	*4.5	12.4	45.1	6.9	52.0
Total	'000	88.3	16.2	36.3	140.9	25.8	166.7
Mean duration of current period of insufficient work	Weeks	58.8	51.0	52.5	56.3	49.8	55.3
Median duration of current period of insufficient work	Weeks	26	*27	26	26	22	26

* estimate has a relative standard error of between 25% and 50% and should be used with caution

** estimate has a relative standard error greater than 50% and is considered too unreliable for general use

LOOKING OR AVAILABLE LAST WEEK

		Looking and available	Looking but not available	Not looking but available	Total	Not looking and not available last week	Total
FEMALES							
Age group (years)							
15-19	'000	19.3	*3.2	9.2	31.6	7.0	38.6
20-24	'000	16.4	6.9	9.8	33.1	8.2	41.4
25-34	'000	21.7	6.6	11.1	39.5	11.8	51.3
35-44	'000	21.0	8.4	18.8	48.2	20.7	68.9
45-54	'000	19.1	7.2	17.1	43.4	12.8	56.2
55 and over	'000	*3.3	*1.6	*3.7	8.6	5.7	14.4
Relationship in household							
Family member	'000	81.8	25.3	59.4	166.5	55.2	221.7
Husband or wife	'000	41.7	13.3	38.5	93.5	29.9	123.3
Lone parent	'000	12.3	*3.9	9.2	25.4	13.1	38.4
Dependent student	'000	8.4	*2.1	5.6	16.1	4.9	21.0
Non-dependent child	'000	16.2	4.8	5.9	26.9	7.0	34.0
Other family person	'000	*3.2	*1.2	**0.2	4.6	**0.3	4.9
Non-family member	'000	16.9	7.0	9.5	33.4	9.2	42.6
Family status not determined	'000	*2.1	*1.6	*0.8	*4.6	*1.9	6.5
Preferred total number of hours							
Less than 35	'000	42.7	13.0	38.5	94.2	31.1	125.3
35 or more	'000	58.1	20.8	31.2	110.2	35.2	145.4
Preferred number of extra hours							
Less than 10	'000	21.7	8.8	27.3	57.8	25.8	83.7
10-19	'000	45.6	16.4	31.4	93.4	30.4	123.8
20-29	'000	18.7	7.2	8.2	34.1	6.9	40.9
30 or more	'000	14.9	*1.5	*2.8	19.2	*3.2	22.4
Whether would prefer to change employer to work more hours							
Would prefer to change employer	'000	35.1	15.2	20.4	70.7	12.4	83.1
Would prefer not to change employer	'000	41.9	12.3	40.5	94.7	43.8	138.5
No preference	'000	23.8	6.4	8.8	39.0	10.1	49.1
Whether would prefer to change occupation to work more hours							
Would prefer to change occupation	'000	46.8	16.2	27.5	90.5	21.9	112.4
Would prefer not to change occupation	'000	35.6	13.6	31.2	80.4	36.7	117.1
No preference	'000	18.4	*4.1	11.1	33.6	7.7	41.2
Duration of current period of insufficient work (weeks)							
1-3	'000	8.6	*2.2	6.0	16.9	6.3	23.1
4-12	'000	24.3	8.8	16.4	49.5	13.5	63.0
13-51	'000	34.7	12.8	21.0	68.5	23.3	91.8
52 and over	'000	33.2	10.1	26.3	69.5	23.3	92.8
Total	'000	100.8	33.9	69.7	204.4	66.3	270.8
Mean duration of current period of insufficient work	Weeks	58.0	48.3	59.5	56.9	71.8	60.5
Median duration of current period of insufficient work	Weeks	26	26	27	26	27	27

* estimate has a relative standard error of between 25% and 50% and should be used with caution

** estimate has a relative standard error greater than 50% and is considered too unreliable for general use

LOOKING OR AVAILABLE LAST WEEK

		Looking and available	Looking but not available	Not looking but available	Total	Not looking and not available last week	Total
PERSONS							
Age group (years)							
15-19	'000	38.3	7.6	17.0	62.8	12.9	75.7
20-24	'000	33.4	11.5	18.6	63.5	10.9	74.5
25-34	'000	40.2	7.2	15.9	63.3	15.3	78.6
35-44	'000	33.0	11.7	23.8	68.5	26.1	94.7
45-54	'000	32.0	10.4	21.9	64.3	18.2	82.5
55 and over	'000	12.3	*1.8	8.8	22.9	8.7	31.6
Relationship in household							
Family member	'000	149.5	36.6	90.5	276.6	73.9	350.4
Husband or wife	'000	74.9	17.2	53.3	145.5	39.0	184.4
Lone parent	'000	14.1	4.6	10.7	29.4	14.1	43.5
Dependent student	'000	15.2	*3.6	11.1	30.0	8.8	38.8
Non-dependent child	'000	40.3	9.6	14.4	64.2	11.3	75.5
Other family person	'000	4.9	*1.5	*1.1	7.5	*0.8	8.3
Non-family member	'000	32.8	10.5	14.3	57.6	15.5	73.1
Family status not determined	'000	6.9	*3.1	*1.2	11.2	*2.7	13.9
Preferred total number of hours							
Less than 35	'000	60.3	15.4	53.1	128.8	38.9	167.7
35 or more	'000	128.9	34.7	53.0	216.6	53.2	269.7
Preferred number of extra hours							
Less than 10	'000	32.4	11.0	37.5	80.9	35.8	116.8
10-19	'000	79.9	25.0	49.5	154.4	41.1	195.5
20-29	'000	46.7	9.4	14.4	70.5	11.3	81.8
30 or more	'000	30.3	4.6	*4.5	39.4	*4.0	43.4
Whether would prefer to change employer to work more hours							
Would prefer to change employer	'000	63.9	21.2	30.2	115.3	16.7	132.0
Would prefer not to change employer	'000	73.0	18.5	60.0	151.5	58.0	209.6
No preference	'000	52.2	10.4	15.8	78.5	17.4	95.9
Whether would prefer to change occupation to work more hours							
Would prefer to change occupation	'000	83.8	24.1	40.9	148.8	29.4	178.2
Would prefer not to change occupation	'000	64.7	19.4	46.9	131.0	51.4	182.5
No preference	'000	40.6	6.6	18.2	65.4	11.3	76.7
Duration of current period of insufficient work (weeks)							
1-3	'000	19.7	*4.1	8.2	32.0	10.7	42.6
4-12	'000	45.4	12.1	24.1	81.7	18.3	99.9
13-51	'000	62.6	19.4	35.0	117.0	32.9	149.9
52 and over	'000	61.4	14.5	38.7	114.7	30.2	144.9
Total	'000	189.2	50.1	106.0	345.3	92.1	437.4
Mean duration of current period of insufficient work	Weeks	58.4	49.2	57.1	56.6	65.7	58.5
Median duration of current period of insufficient work	Weeks	26	26	27	26	27	26

* estimate has a relative standard error of between 25% and 50% and should be used with caution

DURATION OF CURRENT
PERIOD OF INSUFFICIENT
WORK (WEEKS)

	1-12	13-51	52 and over	Total	Mean duration	Median duration
	'000	'000	'000	'000	Weeks	Weeks
MALES						
State or Territory of usual residence						
New South Wales	15.9	20.0	15.3	51.3	54.6	27
Victoria	9.6	14.2	14.8	38.7	69.8	32
Queensland	16.4	10.8	8.2	35.4	46.3	14
South Australia	5.5	*4.4	6.7	16.6	60.0	*37
Western Australia	6.8	5.2	*3.4	15.4	34.7	*15
Tasmania	*1.1	*2.3	*2.9	6.2	*65.8	*40
Northern Territory(a)	**0.3	**0.1	—	**0.5	**11.4	**8
Australian Capital Territory	*0.8	*1.0	*0.8	*2.6	**48.4	**21
Age group (years)						
15-19	13.8	16.6	6.7	37.1	28.7	18
20-24	12.0	11.5	9.5	33.1	40.7	27
25-34	9.6	8.1	9.7	27.3	50.7	26
35-44	9.8	7.3	8.6	25.7	83.8	26
45-54	8.7	9.1	8.5	26.3	69.9	26
55 and over	*2.6	5.6	9.0	17.2	83.0	*52
Birthplace and period of arrival						
Born in Australia	40.7	45.3	38.9	124.8	55.5	26
Born outside Australia	15.8	12.8	13.2	41.8	54.7	25
Arrived before 1971	*1.3	*3.6	4.9	9.8	*76.8	*51
Arrived 1971 to 1980	*3.9	*1.4	*1.2	6.5	*33.8	*12
Arrived 1981 to 1990	*4.6	*2.5	*3.5	10.5	*55.4	*24
Arrived 1991 to survey date	6.0	5.3	*3.6	14.9	49.0	*20
Born in main English-speaking countries	5.4	*4.0	5.0	14.4	66.4	*22
Born in other countries	10.4	8.8	8.2	27.4	48.6	25
Educational attainment						
With post-school qualifications(b)	18.8	17.9	19.5	56.1	62.3	26
Higher degree or post-graduate diploma	*1.1	—	*1.6	*2.7	**75.0	**53
Bachelor degree	*4.1	*3.9	*3.0	11.1	*50.7	*25
Undergraduate or associate diploma	*3.1	*1.7	*4.3	9.1	*101.4	*27
Skilled or basic vocational qualification	10.5	12.3	10.5	33.3	54.5	26
Without post-school qualifications(c)	33.5	34.1	30.5	98.0	55.3	26
Completed highest level of secondary school	15.3	17.8	12.0	45.1	48.5	26
Did not complete highest level of secondary school	18.1	16.2	18.5	52.9	61.1	27
Still at school	*4.2	6.2	*2.1	12.5	*23.2	*21
Status in employment						
Employee	48.6	48.4	40.9	138.0	52.2	26
Employer	**0.2	**0.4	**0.6	*1.3	**62.5	**86
Own account worker	5.5	7.1	8.7	21.3	79.1	*27
Contributing family worker	*2.1	*2.2	*1.8	6.1	*41.0	*21
Total	56.5	58.1	52.0	166.7	55.3	26

* estimate has a relative standard error of between 25% and 50% and should be used with caution

** estimate has a relative standard error greater than 50% and is considered too unreliable for general use

— nil or rounded to zero (including null cells)

(a) Refers to mainly urban areas only.

(b) Includes nursing level unknown.

(c) Includes never attended school.

DURATION OF CURRENT
PERIOD OF INSUFFICIENT
WORK (WEEKS)

	1-12	13-51	52 and over	Total	Mean duration	Median duration
	'000	'000	'000	'000	Weeks	Weeks
FEMALES						
State or Territory of usual residence						
New South Wales	18.5	28.7	24.5	71.7	62.2	26
Victoria	19.8	20.4	24.2	64.3	64.9	31
Queensland	22.6	17.2	20.7	60.5	57.0	26
South Australia	8.5	6.9	11.3	26.7	72.5	28
Western Australia	12.4	15.4	7.5	35.3	45.1	20
Tasmania	*2.7	*1.5	*3.5	7.6	*82.8	*37
Northern Territory(a)	**0.6	**0.5	**0.2	*1.4	**23.3	**16
Australian Capital Territory	*1.1	*1.2	*1.0	*3.2	*37.8	**27
Age group (years)						
15-19	16.0	16.5	6.2	38.6	27.1	18
20-24	14.4	15.9	11.0	41.4	40.0	23
25-34	20.1	15.8	15.4	51.3	41.5	20
35-44	18.3	21.7	28.9	68.9	75.7	37
45-54	14.6	16.7	24.9	56.2	88.3	39
55 and over	*2.7	5.2	6.5	14.4	96.2	*40
Birthplace and period of arrival						
Born in Australia	69.1	70.8	69.5	209.5	58.9	26
Born outside Australia	17.0	21.0	23.3	61.3	66.1	29
Arrived before 1971	*2.4	6.7	7.2	16.3	88.0	*50
Arrived 1971 to 1980	*3.9	*3.9	*3.9	11.8	*67.2	*32
Arrived 1981 to 1990	6.4	5.5	6.2	18.2	55.6	*25
Arrived 1991 to survey date	*4.3	4.8	6.0	15.0	54.1	*26
Born in main English-speaking countries	7.3	9.4	7.8	24.5	58.5	27
Born in other countries	9.7	11.6	15.5	36.8	71.1	34
Educational attainment						
With post-school qualifications(b)	31.2	33.0	41.0	105.2	61.6	28
Higher degree or post-graduate diploma	*1.9	*1.6	*2.0	5.5	*38.6	*32
Bachelor degree	5.6	7.2	9.0	21.8	77.6	33
Undergraduate or associate diploma	5.0	6.1	9.9	20.9	71.9	*36
Skilled or basic vocational qualification	18.8	17.8	19.4	55.9	52.6	26
Without post-school qualifications(c)	51.0	54.2	50.6	155.9	62.1	26
Completed highest level of secondary school	23.4	22.9	14.7	61.0	41.4	19
Did not complete highest level of secondary school	27.6	31.3	35.9	94.8	75.5	30
Still at school	*3.9	4.6	*1.3	9.7	*24.1	*24
Status in employment						
Employee	78.6	84.9	83.7	247.2	59.0	27
Employer	**0.5	**0.6	*1.0	*2.1	**172.8	**33
Own account worker	*4.3	*4.5	6.5	15.3	79.1	*36
Contributing family worker	*2.7	*1.8	*1.6	6.1	*36.7	*18
Total	86.1	91.8	92.8	270.8	60.5	27

* estimate has a relative standard error of between 25% and 50% and should be used with caution

** estimate has a relative standard error greater than 50% and is considered too unreliable for general use

(a) Refers to mainly urban areas only.

(b) Includes nursing level unknown.

(c) Includes never attended school.

	DURATION OF CURRENT PERIOD OF INSUFFICIENT WORK (WEEKS)					
	1-12	13-51	52 and over	Total	Mean duration	Median duration
	'000	'000	'000	'000	Weeks	Weeks
PERSONS						
State or Territory of usual residence						
New South Wales	34.4	48.7	39.9	123.0	59.0	26
Victoria	29.4	34.6	39.0	103.0	66.8	32
Queensland	39.0	28.1	28.9	96.0	53.0	21
South Australia	14.0	11.3	17.9	43.3	67.7	36
Western Australia	19.1	20.7	10.9	50.7	42.0	18
Tasmania	*3.8	*3.8	6.3	13.9	*75.1	*39
Northern Territory(a)	*1.0	**0.7	**0.2	*1.9	**20.3	**11
Australian Capital Territory	*1.9	*2.2	*1.7	5.8	*42.5	*26
Age group (years)						
15-19	29.8	33.1	12.9	75.7	27.9	18
20-24	26.5	27.5	20.5	74.5	40.3	26
25-34	29.7	23.9	25.1	78.6	44.7	23
35-44	28.1	29.0	37.5	94.7	77.9	33
45-54	23.3	25.7	33.5	82.5	82.5	32
55 and over	5.3	10.8	15.5	31.6	89.0	44
Birthplace and period of arrival						
Born in Australia	109.8	116.1	108.4	334.3	57.6	26
Born outside Australia	32.8	33.8	36.5	103.1	61.5	27
Arrived before 1971	*3.7	10.3	12.1	26.1	83.8	50
Arrived 1971 to 1980	7.9	5.4	5.1	18.3	55.2	*21
Arrived 1981 to 1990	11.0	8.0	9.7	28.7	55.5	25
Arrived 1991 to survey date	10.2	10.1	9.6	30.0	51.6	26
Born in main English-speaking countries	12.7	13.4	12.8	38.9	61.4	26
Born in other countries	20.1	20.4	23.7	64.2	61.5	27
Educational attainment						
With post-school qualifications(b)	50.0	50.9	60.5	161.3	61.8	27
Higher degree or post-graduate diploma	*3.0	*1.6	*3.6	8.2	*50.4	*41
Bachelor degree	9.7	11.1	12.1	32.9	68.5	27
Undergraduate or associate diploma	8.1	7.7	14.2	30.1	80.9	36
Skilled or basic vocational qualification	29.2	30.1	29.8	89.1	53.3	26
Without post-school qualifications(c)	84.5	88.3	81.1	253.9	59.5	26
Completed highest level of secondary school	38.8	40.8	26.6	106.2	44.4	24
Did not complete highest level of secondary school	45.7	47.6	54.5	147.7	70.3	27
Still at school	8.1	10.8	*3.3	22.2	23.6	21
Status in employment						
Employee	127.2	133.4	124.6	385.2	56.6	26
Employer	**0.7	*1.0	*1.7	*3.4	*132.0	*40
Own account worker	9.8	11.5	15.2	36.6	79.1	32
Contributing family worker	4.8	*4.0	*3.4	12.3	*38.8	*21
Total	142.6	149.9	144.9	437.4	58.5	26

* estimate has a relative standard error of between 25% and 50% and should be used with caution

** estimate has a relative standard error greater than 50% and is considered too unreliable for general use

(a) Refers to mainly urban areas only.

(b) Includes nursing level unknown.

(c) Includes never attended school.

PERSONS LOOKING OR AVAILABLE FOR WORK WITH MORE HOURS (a)

	PREFERRED NUMBER OF EXTRA HOURS					Mean preferred number of extra hours Hours
	Less than 10	10-19	20-29	30 or more	Total	
	'000	'000	'000	'000	'000	
MALES						
Age group (years)						
15-19	7.6	13.5	8.6	*3.7	33.4	16.9
20-24	5.5	14.1	7.1	5.6	32.3	18.2
25-34	*4.5	9.9	8.9	*2.6	25.9	18.6
35-44	*3.7	10.4	5.3	*3.4	22.8	17.6
45-54	*4.4	9.8	5.3	*4.2	23.7	18.8
55 and over	*2.7	8.4	*3.5	*0.9	15.5	16.0
Status in employment						
Employee	24.6	57.7	30.3	15.1	127.7	17.4
Employer	—	*0.8	**0.4	—	*1.3	*15.7
Own account worker	*3.7	6.4	5.4	*2.9	18.5	18.0
Contributing family worker	—	*1.2	*2.7	*2.2	6.1	24.7
Usual number of hours worked						
1-5	4.7	*3.8	*1.6	6.5	16.6	20.9
6-10	*3.9	6.3	6.8	12.0	29.0	22.9
11-15	*3.2	4.6	13.5	*0.8	22.2	20.3
16-20	*1.5	17.2	15.7	*0.8	35.2	18.6
21-29	*3.5	26.3	**0.4	—	30.2	13.7
30-34	11.1	7.5	*0.8	**0.2	19.6	9.6
35 hours or more	**0.3	**0.4	—	—	*0.7	*11.3
Whether would move interstate if offered a suitable job						
Would move interstate	5.4	13.6	9.0	6.0	34.1	19.0
Would not move interstate	20.6	42.8	24.3	11.0	98.8	17.1
Might move interstate	*1.3	8.1	*4.5	*2.0	15.9	18.6
Don't know	*1.0	*1.6	*0.9	*1.2	4.8	19.4
Whether would move intrastate if offered a suitable job						
Would move intrastate	5.5	19.5	12.3	8.5	45.8	19.5
Would not move intrastate	18.7	37.1	20.4	7.6	83.8	16.6
Might move intrastate	*3.6	9.1	5.2	*3.4	21.4	18.1
Don't know	**0.5	**0.5	*0.9	*0.7	*2.6	*21.5
Total	28.3	66.2	38.8	20.3	153.6	17.8

* estimate has a relative standard error of between 25% and 50% and should be used with caution

— nil or rounded to zero (including null cells)

** estimate has a relative standard error greater than 50% and is considered too unreliable for general use

(a) Availability refers to last week or within four weeks.

	PREFERRED NUMBER OF EXTRA HOURS					Mean preferred number of extra hours Hours
	Less than 10	10-19	20-29	30 or more	Total	
	'000	'000	'000	'000	'000	
FEMALES						
Age group (years)						
15-19	15.1	12.2	4.7	*2.9	34.9	13.4
20-24	9.0	18.5	6.9	*3.5	38.0	15.9
25-34	9.6	23.9	7.0	6.1	46.7	16.5
35-44	18.7	26.9	9.0	*4.1	58.7	14.5
45-54	17.0	21.6	8.3	*3.8	50.7	14.5
55 and over	*3.2	7.4	*1.2	**0.5	12.2	13.4
Status in employment						
Employee	69.8	102.5	32.0	17.7	222.1	14.6
Employer	**0.3	*1.2	**0.4	—	*1.9	*14.4
Own account worker	*1.4	4.7	*3.9	*1.8	11.9	18.6
Contributing family worker	*1.1	*2.0	*0.8	*1.5	5.3	18.6
Usual number of hours worked						
1-5	9.3	10.7	*2.7	8.9	31.6	18.4
6-10	10.7	17.9	9.1	11.5	49.2	18.2
11-15	11.6	14.7	13.4	—	39.7	15.4
16-20	11.2	22.4	10.1	**0.3	44.0	14.7
21-29	13.5	37.1	*1.5	—	52.1	12.2
30-34	15.6	7.5	—	**0.3	23.3	8.8
35 hours or more	**0.7	**0.2	**0.3	—	*1.2	*10.8
Whether would move interstate if offered a suitable job						
Would move interstate	7.6	16.6	8.4	*4.5	37.2	17.1
Would not move interstate	62.3	83.3	24.2	13.3	183.2	14.1
Might move interstate	*2.4	7.2	*4.5	*1.6	15.8	17.8
Don't know	**0.2	*3.3	—	*1.6	5.1	18.8
Whether would move intrastate if offered a suitable job						
Would move intrastate	12.8	25.8	9.9	6.7	55.3	16.4
Would not move intrastate	55.0	69.2	20.6	10.6	155.4	13.9
Might move intrastate	4.7	14.6	6.0	*2.7	28.1	16.8
Don't know	—	*0.9	**0.5	*1.0	*2.4	*22.4
Total	72.6	110.5	37.1	21.0	241.2	14.9

* estimate has a relative standard error of between 25% and 50% and should be used with caution
 ** estimate has a relative standard error greater than 50% and is considered too unreliable for general use
 — nil or rounded to zero (including null cells)
 (a) Availability refers to last week or within four weeks.

	PREFERRED NUMBER OF EXTRA HOURS					Mean preferred number of extra hours
	Less than 10	10-19	20-29	30 or more	Total	
	'000	'000	'000	'000	'000	
PERSONS						
Age group (years)						
15-19	22.6	25.7	13.3	6.6	68.3	15.1
20-24	14.4	32.6	14.1	9.1	70.2	17.0
25-34	14.1	33.8	15.9	8.7	72.6	17.3
35-44	22.4	37.3	14.3	7.5	81.5	15.3
45-54	21.4	31.4	13.6	8.0	74.4	15.9
55 and over	5.9	15.8	4.7	*1.4	27.7	14.8
Status in employment						
Employee	94.5	160.3	62.3	32.8	349.8	15.6
Employer	**0.3	*2.1	*0.8	—	*3.2	14.9
Own account worker	5.1	11.1	9.4	4.8	30.3	18.2
Contributing family worker	*1.1	*3.2	*3.5	*3.7	11.4	21.9
Usual number of hours worked						
1-5	14.0	14.5	*4.3	15.3	48.1	19.3
6-10	14.6	24.2	15.9	23.5	78.2	19.9
11-15	14.9	19.3	27.0	*0.8	61.9	17.2
16-20	12.7	39.7	25.8	*1.2	79.3	16.4
21-29	17.0	63.3	*1.9	—	82.3	12.8
30-34	26.6	15.0	*0.8	**0.5	43.0	9.2
35 hours or more	*1.0	**0.6	**0.3	—	*1.9	*11.0
Whether would move interstate if offered a suitable job						
Would move interstate	13.1	30.2	17.5	10.5	71.3	18.0
Would not move interstate	82.9	126.2	48.5	24.3	281.9	15.2
Might move interstate	*3.8	15.3	8.9	*3.6	31.7	18.2
Don't know	*1.2	5.0	*0.9	*2.8	9.9	19.1
Whether would move intrastate if offered a suitable job						
Would move intrastate	18.3	45.3	22.2	15.2	101.0	17.8
Would not move intrastate	73.7	106.2	41.0	18.2	239.2	14.8
Might move intrastate	8.3	23.7	11.3	6.2	49.5	17.4
Don't know	**0.5	*1.4	*1.4	*1.7	5.0	21.9
Total	100.9	176.6	75.9	41.3	394.7	16.0

* estimate has a relative standard error of between 25% and 50% and should be used with caution

** estimate has a relative standard error greater than 50% and is considered too unreliable for general use

— nil or rounded to zero (including null cells)

(a) Availability refers to last week or within four weeks.

PERSONS LOOKING OR AVAILABLE FOR WORK WITH MORE HOURS (a)

	NUMBER			MEAN PREFERRED NUMBER OF EXTRA HOURS		
	<i>Males</i>	<i>Females</i>	<i>Persons</i>	<i>Males</i>	<i>Females</i>	<i>Persons</i>
	'000	'000	'000	Hours	Hours	Hours
<i>Main difficulty in finding work</i>						
Had been looking for work with more hours						
Own ill health or disability	*4.4	*3.3	7.7	20.4	19.5	20.0
Considered too young or too old by employers	7.4	12.9	20.3	19.2	17.3	18.0
Unsuitable hours	5.2	9.1	14.3	11.9	12.3	12.2
Too far to travel/transport problems	5.1	7.3	12.4	23.3	15.7	18.9
Lacked necessary skills or education	8.3	10.5	18.8	22.3	19.3	20.6
Language difficulties	*1.8	*2.5	*4.2	*22.6	*23.5	23.1
Insufficient work experience	7.3	13.6	20.8	20.3	18.3	19.0
No vacancies in line of work	27.7	21.2	48.8	19.2	17.1	18.3
Too many applicants for available jobs	9.4	9.5	18.9	*17.4	14.9	16.2
No vacancies at all	9.3	13.0	22.3	18.4	18.2	18.3
Difficulties with ethnic background	**0.6	*0.8	*1.4	*15.5	*10.1	*12.5
Difficulties with childcare	**0.2	*1.5	*1.7	**10.5	*21.4	*20.2
Other family responsibilities	*1.5	*4.5	6.0	*17.9	12.8	14.1
Other difficulties	8.9	13.7	22.6	23.9	14.2	18.1
No difficulties reported	7.4	11.5	19.0	16.9	14.4	15.4
<i>Total</i>	104.6	134.7	239.3	19.4	16.5	17.8
Had not been looking for work with more hours	49.0	106.5	155.4	14.3	12.8	13.3
Total	153.6	241.2	394.7	17.8	14.9	16.0

* estimate has a relative standard error of between 25% and 50% and should be used with caution

** estimate has a relative standard error greater than 50% and is considered too unreliable for general use

(a) Available refers to last week or within four weeks.

PERSONS LOOKING OR AVAILABLE FOR WORK WITH MORE HOURS (a)

	PREFERRED NUMBER OF EXTRA HOURS					Mean preferred number of extra hours
	Less than 10	10-19	20-29	30 or more	Total	
<i>All steps taken to find work in the last four weeks</i>	'000	'000	'000	'000	'000	Hours
MALES						
Registered with Centrelink for job search assistance	*1.9	14.8	15.6	11.0	43.2	22.5
Contacted prospective employers	10.2	33.4	27.6	16.6	87.8	20.0
Checked Centrelink touchscreens	*1.2	7.8	10.4	5.2	24.6	22.3
Checked factory noticeboards	—	*3.0	*2.3	*1.8	7.1	23.4
Checked or registered with any other employment agency	*1.3	8.4	6.1	7.9	23.7	22.4
Looked in newspapers	6.6	27.2	18.5	14.1	66.4	20.3
Searched Internet sites	*1.6	6.4	*3.2	*4.4	15.7	21.0
Answered a newspaper advertisement for a job	*1.4	9.5	7.3	5.1	23.4	21.1
Advertised or tendered for work	*0.9	*3.8	*2.3	*2.0	9.0	19.9
Contacted friends or relatives	*3.0	13.1	9.8	7.3	33.2	20.8
Other steps taken to look for work	*1.1	6.0	*4.5	*1.6	13.2	19.3
Had not been looking for work with more hours	15.4	23.2	8.6	*1.8	49.0	14.3
FEMALES						
Registered with Centrelink for job search assistance	*3.4	14.2	12.8	6.6	37.0	20.5
Contacted prospective employers	20.9	48.8	20.9	15.3	105.9	17.3
Checked Centrelink touchscreens	*2.5	9.5	6.5	5.1	23.6	20.3
Checked factory noticeboards	*0.9	*2.8	*1.0	*1.0	5.6	18.5
Checked or registered with any other employment agency	*4.5	12.1	6.5	5.0	28.1	18.7
Looked in newspapers	18.1	41.6	17.4	13.9	91.0	17.3
Searched Internet sites	*3.0	6.1	*2.8	*2.3	14.2	17.6
Answered a newspaper advertisement for a job	5.4	14.3	7.4	5.5	32.7	18.2
Advertised or tendered for work	*0.8	*4.4	*2.4	**0.5	8.0	16.7
Contacted friends or relatives	6.4	18.0	8.8	6.1	39.4	17.9
Other steps taken to look for work	*4.0	7.2	*4.6	*1.5	17.3	16.5
Had not been looking for work with more hours	42.1	48.5	11.2	4.6	106.5	12.8
PERSONS						
Registered with Centrelink for job search assistance	5.3	29.0	28.4	17.6	80.2	21.6
Contacted prospective employers	31.1	82.2	48.6	31.9	193.8	18.5
Checked Centrelink touchscreens	*3.7	17.3	16.9	10.3	48.2	21.3
Checked factory noticeboards	*0.9	5.8	*3.3	*2.7	12.7	21.2
Checked or registered with any other employment agency	5.8	20.5	12.6	12.9	51.8	20.4
Looked in newspapers	24.7	68.8	35.9	28.0	157.4	18.5
Searched Internet sites	4.6	12.5	6.0	6.8	29.9	19.3
Answered a newspaper advertisement for a job	6.8	23.8	14.8	10.7	56.1	19.4
Advertised or tendered for work	*1.7	8.2	4.7	*2.5	17.1	18.4
Contacted friends or relatives	9.4	31.2	18.7	13.4	72.6	19.3
Other steps taken to look for work	5.2	13.2	9.0	*3.1	30.6	17.7
Had not been looking for work with more hours	57.5	71.8	19.8	6.4	155.4	13.3

* estimate has a relative standard error of between 25% and 50% and should be used with caution

— nil or rounded to zero (including null cells)

** estimate has a relative standard error greater than 50% and is considered too unreliable for general use

(a) Availability refers to last week or within four weeks.

	NSW	Vic.	Qld	SA	WA	Tas.	NT(a)	ACT	Aust.
	'000	'000	'000	'000	'000	'000	'000	'000	'000
MALES									
Population 1									
Persons aged 15 and over	2 537.0	1 873.9	1 376.2	588.9	737.8	180.7	59.3	119.0	7 472.9
Population 2									
Employed persons	1 733.9	1 285.6	939.1	380.8	515.4	110.4	44.1	90.4	5 099.9
Population 3									
Fully employed workers	1 672.0	1 235.5	895.5	361.6	496.3	102.6	42.9	87.2	4 893.6
Population 4									
Employed persons who usually work part-time and want more hours	51.3	38.7	35.4	16.6	15.4	6.2	*0.5	2.6	166.7
Population 5									
Employed persons who usually work part-time and want more hours who had been looking for work or were available to start such work last week or within four weeks	45.6	36.3	34.0	15.6	13.7	5.7	**0.4	2.3	153.6
FEMALES									
Population 1									
Persons aged 15 and over	2 617.7	1 952.6	1 409.3	615.4	739.6	190.5	53.5	124.3	7 703.0
Population 2									
Employed persons	1 354.0	1 018.3	747.4	301.6	411.1	88.2	36.1	81.6	4 038.3
Population 3									
Fully employed workers	1 280.8	951.3	685.7	273.9	374.4	80.2	34.7	78.3	3 759.3
Population 4									
Employed persons who usually work part-time and want more hours	71.7	64.3	60.5	26.7	35.3	7.6	1.4	3.2	270.8
Population 5									
Employed persons who usually work part-time and want more hours who had been looking for work or were available to start such work last week or within four weeks	61.9	56.8	55.1	24.1	32.2	7.0	1.3	2.7	241.2
PERSONS									
Population 1									
Persons aged 15 and over	5 154.7	3 826.5	2 785.5	1 204.3	1 477.4	371.2	112.8	243.4	15 175.9
Population 2									
Employed persons	3 088.0	2 303.9	1 686.5	682.4	926.5	198.6	80.2	172.0	9 138.2
Population 3									
Fully employed workers	2 952.8	2 186.8	1 581.2	635.5	870.7	182.8	77.6	165.6	8 653.0
Population 4									
Employed persons who usually work part-time and want more hours	123.0	103.0	96.0	43.3	50.7	13.9	1.9	5.8	437.4
Population 5									
Employed persons who usually work part-time and want more hours who had been looking for work or were available to start such work last week or within four weeks	107.5	93.1	89.1	39.7	45.9	12.7	1.6	5.0	394.7

* estimate has a relative standard error of between 25% and 50% and should be used with caution

** estimate has a relative standard error greater than 50% and is considered too unreliable for general use

(a) Refers to mainly urban areas only.

EXPLANATORY NOTES

INTRODUCTION

1 The statistics in this publication were compiled from data collected in the Underemployed Workers Survey conducted throughout Australia in September 2000 as a supplement to the monthly Labour Force Survey (LFS). Respondents to the LFS who fell within the scope of the supplementary survey were asked further questions.

2 The publication *Labour Force, Australia* (Cat. no. 6203.0) contains information about survey design, sample redesign, scope, coverage and population benchmarks relevant to the monthly LFS, which also apply to supplementary surveys. It also contains definitions of demographic and labour force characteristics which are relevant to both the monthly LFS and supplementary surveys.

SCOPE

3 The scope of the LFS was restricted to persons aged 15 and over and excluded the following persons:

- members of the permanent defence forces;
- certain diplomatic personnel of overseas governments, customarily excluded from census and estimated populations;
- overseas residents in Australia;
- members of non-Australian defence forces (and their dependants).

4 Students at boarding schools, patients in hospitals, residents of homes (e.g. retirement homes, homes for persons with handicaps), and inmates of prisons are excluded from all supplementary surveys. However, they have been included in the estimates of persons not in the labour force and the civilian population which appear in Table 1 of this publication.

5 The survey was conducted in both urban and rural areas in all States and Territories, but excluded approximately 80,000 persons living in remote and sparsely settled parts of Australia who would otherwise have been within the scope of the survey. The exclusion of these persons will have only a minor impact on any aggregate estimates that are produced for individual States and Territories, except in the Northern Territory where such persons account for over 20% of the population.

COVERAGE

6 The estimates in this publication relate to persons covered by the survey in September 2000. In the LFS, coverage rules are applied which aim to ensure that each person is associated with only one dwelling and hence has only one chance of selection in the survey. See *Labour Force, Australia* (Cat. no. 6203.0).

RELIABILITY OF THE ESTIMATES

7 Estimates in this publication are subject to sampling and non-sampling errors:

- Sampling error is the difference between the published estimate and the value that would have been produced if all dwellings had been included in the survey. For further information on sampling error, refer to the Technical Note.
- Non-sampling errors are inaccuracies that occur because of imperfections in reporting by respondents and interviewers, and errors made in coding and processing data. These inaccuracies may occur in any enumeration, whether it be a full count or a sample. Every effort is made to reduce the non-sampling error to a minimum by careful design of questionnaires, intensive training and supervision of interviewers, and efficient processing procedures.

SEASONAL FACTORS

8 The estimates are based on information collected in the survey month and, due to seasonal factors, may not be representative of other months of the year.

EXPLANATORY NOTES *continued*

- CLASSIFICATIONS USED **9** The educational attainment data item in this survey has been classified according to the *ABS Classification of Qualifications (ABSCQ)* (Cat no. 1262.0).
- COMPARABILITY OF TIME SERIES **10** Revisions are made to population benchmarks for the LFS after each five-yearly Census of Population and Housing. The last such revision was made in February 1999 to take account of the results of the 1996 Census of Population and Housing. Estimates from supplementary surveys conducted from and including February 1999 are therefore based on revised population benchmarks.
- 11** Supplementary surveys are not always conducted on the full LFS sample. Apart from the scope exclusions listed on the previous page, since August 1994 the sample for supplementary surveys has been restricted to no more than seven-eighths of the LFS sample. This reduction in sample size means that the standard errors for this survey differ from those applicable to surveys prior to 1994.
- 12** Since September 1994, underemployed workers who usually work part-time and were available to start work within four weeks have been asked whether they were also available to start work in the reference week. This question was added to the survey so that estimates of underemployment could be more closely aligned with the then ILO recommendations on underemployment.
- COMPARABILITY WITH LABOUR FORCE SURVEY STATISTICS **13** Due to differences in the scope and sample size of this supplementary survey and that of the monthly LFS, the estimation procedure may lead to variations between labour force estimates from this survey and those from the LFS.
- COMPARABILITY WITH ILO DEFINITIONS **14** Comparability of the concepts and definitions used in the Underemployed Workers Survey are discussed in Conceptual Framework on page 3.
- PREVIOUS SURVEYS **15** The Underemployed Workers Survey was conducted in May 1985, 1988 and 1991. In 1994, the survey became an annual survey, collected each September. Results of previous surveys were published in: *Underemployed Workers, Australia* (Cat. no. 6265.0); and the standard data service *Underemployed Workers, Australia* (Cat. no. 6265.0.40.001) for 1994 and 1995.
- NEXT SURVEY **16** The ABS plans to conduct this survey again in September 2001.
- ACKNOWLEDGMENT **17** ABS publications draw extensively on information provided freely by individuals, businesses, governments and other organisations. Their continued cooperation is very much appreciated: without it, the wide range of statistics published by the ABS would not be available. Information received by the ABS is treated in strict confidence as required by the *Census and Statistics Act 1905*.
- RELATED PUBLICATIONS **18** ABS publications which may be of interest include:
- *Job Search Experience of Unemployed Persons, Australia* (Cat. no. 6222.0)
 - *Labour Force, Australia* (Cat. no. 6203.0)
 - *Labour Force Experience, Australia* (Cat. no. 6206.0)
 - *Labour Mobility, Australia* (Cat. no. 6209.0)
 - *Persons Not in the Labour Force, Australia* (Cat. no. 6220.0)
 - *Successful and Unsuccessful Job Search Experience, Australia* (Cat. no. 6245.0)
 - *Working Arrangements, Australia* (Cat. no. 6342.0)
- 19** Current publications produced by the ABS are listed in the *Catalogue of Publications and Products* (Cat. no. 1101.0). The ABS also issues on Tuesdays and Fridays, a *Release Advice* (Cat. no. 1105.0) which lists publications to be

EXPLANATORY NOTES *continued*

RELATED PUBLICATIONS *continued*

released in the next few days. The Catalogue and Release Advice are available from any ABS office or from the ABS Information Service on the World Wide Web, <URL:<http://www.abs.gov.au>>.

APPENDIX 1 POPULATIONS AND DATA ITEMS LIST

The ABS has a range of data available on request from the Underemployed Workers Survey. This section lists the data items and populations which relate to the survey. More detailed breakdowns of some data items may also be available on request.

The population(s) for a particular data item refers to the person in the survey to whom the data item relates. Where alternative output categories are available for the same data item, these are shown and the data item name is followed by a bracketed numeral (e.g. BIRTHPLACE (2)).

For more information about ABS data available on request contact Annette Milnes on Canberra 02 6252 7240, or by facsimile on 02 6252 7784.

Population 1	Persons aged 15 years and over.
Population 2	Employed persons.
Population 3	Fully employed persons.
Population 4	Employed persons who usually work part-time and want more hours.
Population 5	Employed persons who usually work part-time and want more hours who have been looking for work with more hours or were available to start such work last week.

APPENDIX 1 POPULATIONS AND DATA ITEMS LIST *continued*

<i>Data item</i>	<i>Populations</i>	<i>Data item</i>	<i>Populations</i>
1 State or Territory of usual residence	ALL	7B Birthplace (1)	ALL
New South Wales		Born in Australia	
Victoria		Born outside Australia	
Queensland		Born in main English-speaking countries	
South Australia		Born in other countries	
Western Australia			
Tasmania		7C Birthplace (2)	ALL
Northern Territory		Born in Australia	
Australian Capital Territory		Born outside Australia	
2 Area of usual residence	ALL	The Middle East and North Africa	
State Capital City		Africa (excluding North Africa)	
Balance of State/Territory		Northern America	
3 Region of usual residence	ALL	South America, Central America and the Caribbean	
Standard Labour Force dissemination regions		Northeast Asia	
4 Sex	ALL	Southeast Asia	
Male		Southern Asia	
Female		Europe and the former USSR	
5 Marital status	ALL	Oceania and Antarctica	
Married		New Zealand	
Not married		8 Age group(years)	ALL
6A Relationship in household (1)	ALL	15-19	
Family member		20-24	
Husband or wife		25-34	
With dependants present		35-44	
Without dependants present		45-54	
Lone parent		55-59	
With dependants present		60-64	
Without dependants present		65 years and over	
Dependent student		9 Fully employed or underemployed work status (1)	1-2
Non-dependent child		Employed persons	
Other family person		Fully employed workers	
Non-family member		Full-time workers	
Lone person		Part-time workers	
Not living alone		Usually work full-time but worked part-time	
Not determined		Usually work part-time and want more hours	
6B Relationship in household (2)	ALL	9A Usually work part-time and want more hours(2)	1-2
Family member		Had been looking for work with more hours	
Husband or wife		Looking and available to start	
With children under 15		Looking and available last week	
Without children under 15		Looking and not available last week but within four weeks	
Lone parent		Looking and not available to start	
With children under 15		Had not been looking for work with more hours	
With dependent students but without children under 15		Not looking and available to start	
Without dependants present		Not looking and available last week	
Dependent student		Not looking and not available last week but within four weeks	
Non-dependent child		Not looking and not available to start	
Other family person			
Non-family member		10 Full-time and part-time workers	2
Lone person		Part-time workers	
Not living alone		Full-time workers	
Not determined		11 Whether fully employed or worked part-time and want more hours	2
7A Birthplace and period of arrival	ALL	Fully employed	
Born in Australia		Usually work full-time but worked part-time	
Born outside Australia		Usually work part-time and want more hours	
Arrived before 1971			
Arrived 1971-1980			
Arrived 1981-1990			
Arrived 1991 to survey date			

APPENDIX 1 POPULATIONS AND DATA ITEMS LIST *continued*

<i>Data item</i>	<i>Populations</i>	<i>Data item</i>	<i>Populations</i>
12 Status in employment	2-5	21 Part-time underemployment status	4
Employee		Had been looking for work with more hours	
Employer		Looking and available to start	
Own account worker		Looking and available last week	
Contributing family worker		Looking and not available last week but within 4 weeks	
13 Number of hours worked in the reference week	2-5	Looking and not available to start	
0-5		Had not been looking for work with more hours	
6-10		Not looking and available to start	
11-15		Not looking and available last week	
16-20		Not looking and not available last week but within 4 weeks	
21-29		Not looking and not available to start	
30-34		Not looking and available last week	
35 hours or more		Not looking and not available last week but within 4 weeks	
14 Type of insufficient work	4	Not looking and not available to start	
Part-time		22 All steps taken to find work in the last four weeks	4-5
Full-time		Registered with Centrelink	
15 Duration of current period of insufficient work	4-5	Contacted prospective employers	
1-3 weeks		Check Centrelink touchscreens	
4-12 weeks		Checked factory noticeboards	
13-51 weeks		Checked or registered with any other employment agency	
52 weeks and over		Looked in newspapers	
16 Educational attainment	4-5	Searched internet sites	
With post-school qualifications		Answered a newspaper advertisement for a job	
Higher degree		Advertised or tendered for work	
Post-graduate diploma		Contacted friends or relations	
Bachelor degree		Other steps taken to find work	
Undergraduate or associate diploma		Had not been looking for work with more hours	
Skilled or basic vocational qualification		23 Whether registered with Centrelink	4-5
Nursing level unknown		Registered with Centrelink for job search assistance	
Without post-school qualification		Not registered with Centrelink for job search assistance	
Completed highest level of secondary school		Had not been looking for work with more hours	
Did not complete highest level of secondary school		24 Preferred number of extra hours	4-5
Left aged 15 years or less		Less than 10	
Left aged 16 years		10-19	
Left aged 17 years		20-29	
Left aged 18 years or over		30 or more	
Never attended school		25 Main difficulty in finding work	4-5
Still at school		Had been looking for work with more hours	
17 Whether would move interstate if offered a suitable job	4-5	Own ill health or disability	
Would move interstate		Considered too young or too old by employers	
Would not move interstate		Unsuitable hours	
Might move interstate		Too far to travel/transport problems	
Don't know		Lacked necessary skills or education	
18 Whether would move intrastate if offered a suitable job	4-5	Language difficulties	
Would move intrastate		Insufficient work experience	
Would not move intrastate		No vacancies in line of work	
Might move intrastate		Too many applicants for available jobs	
Don't know		No vacancies at all	
19 Whether would prefer to change occupation to work more hours	4-5	Difficulties with ethnic background	
Would prefer to change occupation		Difficulties with childcare	
Would prefer not to change occupation		Other family responsibilities	
No preference		Other difficulties	
20 Whether would prefer to change employer to work more hours	4-5	No difficulties reported	
Would prefer to change employer		Had not looked for work with more hours	
Would prefer not to change employer			
No preference			

APPENDIX 1 POPULATIONS AND DATA ITEMS LIST *continued*

<i>Data item</i>	<i>Populations</i>
26 Usual number of hours worked	4-5
1-5	
6-10	
11-15	
16-20	
21-29	
30-34	
35 hours or more	
27 Preferred total number of hours	4-5
Less than 30	
30-34	
35-39	
40 and over	

APPENDIX 2 SUPPLEMENTARY SURVEYS

SUPPLEMENTARY SURVEYS

The Monthly Population Survey program collects data on particular aspects of the labour force. The following is an historical list of supplementary and special labour force surveys. Data are available in publication form, by subscription or on request. Additional data from these surveys is available on request and can be obtained by contacting the ABS.

- *Career Experience. Irregular.* Latest issue November 1998 (Cat. no. 6254.0)
- *Career Paths of Persons with Trade Qualifications.* Final issue 1993 (Discontinued) (Cat. no. 6243.0)
- *Child Care. Irregular.* Latest issue June 1999 (Cat. no. 4402.0)
- *Education and Training Experience.* Irregular. Latest issue 1997 (Cat. no. 6278.0)
- *Employee Earnings, Benefits and Trade Union Membership.* Annual. Latest issue August 2000 (Cat. no. 6310.0)
- *Employment Benefits.* Final issue August 1994 (Discontinued) (Cat. no. 6334.0.40.001)
- *Forms of Employment.* Irregular. Latest issue August 1998 (Cat. no. 6359.0)
- *Job Search Experience of Unemployed Persons.* Annual. Latest issue July 2000 (Cat. no. 6222.0)
- *Labour Force Experience.* Two-yearly. Latest issue February 1999 (Cat. no. 6206.0)
- *Labour Force Status and Educational Attainment.* Final issue February 1994 (Discontinued) (Cat. no. 6235.0)
- *Labour Force Status and Other Characteristics of Families.* Annual. Latest issue June 2000 (Cat. no. 6224.0)
- *Labour Force Status and Other Characteristics of Migrants.* Irregular. Latest issue November 1999 (Cat. no. 6250.0)
- *Labour Mobility.* Two-yearly. Latest issue February 2000 (Cat. no. 6209.0)
- *Locations of Work.* Irregular. Latest issue June 2000. (Cat. no. 6275.0)
- *Multiple Jobholding.* Irregular. Latest issue August 1997 (Cat. no. 6216.0)
- *Participation in Education.* Final issue September 1999 (Cat. no. 6272.0)
- *Persons Not in the Labour Force.* Annual. Latest issue September 2000 (Cat. no. 6220.0)
- *Persons Who had Re-entered the Labour Force.* Final issue July 1995 (Discontinued) (Cat. no. 6264.0.40.001)
- *Persons Who Have Left the Labour Force.* Final issue September 1994 (Discontinued) (Cat. no. 6267.0.40.001)
- *Retirement and Retirement Intentions.* Irregular. Latest issue November 1997 (Cat. no. 6238.0)
- *Retrenchment and Redundancy.* Irregular. Latest issue July 1997 (Cat. no. 6266.0)
- *Successful and Unsuccessful Job Search Experience.* Two-yearly. Latest issue July 2000 (Cat. no. 6245.0)
- *Superannuation.* Irregular. Latest issue November 1995 (Cat. no. 6319.0)
- *Trade Union Members.* Two-yearly. August 1996 (Discontinued) (Cat. no. 6325.0)
- *Transition from Education to Work.* Annual. Latest issue May 2000 (Cat. no. 6227.0)
- *Underemployed Workers.* Annual. Latest issue September 2000 (Cat. no. 6265.0)
- *Working Arrangements.* Irregular. Latest issue August 1997 (Cat. no. 6342.0)

INTRODUCTION

1 Since the estimates in this publication are based on information obtained from occupants of a sample of dwellings, they are subject to sampling variability. That is, they may differ from those estimates that would have been produced if all dwellings had been included in the survey. One measure of the likely difference is given by the standard error (SE), which indicates the extent to which an estimate might have varied by chance because only a sample of dwellings was included. There are about two chances in three (67%) that a sample estimate will differ by less than one SE from the number that would have been obtained if all dwellings had been included, and about 19 chances in 20 (95%) that the difference will be less than two SEs. Another measure of the likely difference is the relative standard error (RSE), which is obtained by expressing the SE as a percentage of the estimate.

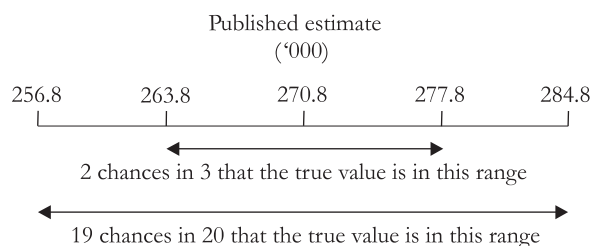
2 Due to space limitations, it is impractical to print the SE of each estimate in the publication. Instead, a table of SEs is provided to enable readers to determine the SE for an estimate from the size of that estimate (see table T1). The SE table is derived from a mathematical model, referred to as the "SE model", which is created using data from a number of past Labour Force Surveys. It should be noted that the SE model only gives an approximate value for the SE for any particular estimate, since there is some minor variation between SEs for different estimates of the same size.

CALCULATION OF STANDARD ERROR

3 An example of the calculation and the use of SEs in relation to estimates of persons is as follows. Table 5 shows the estimated number of female workers who usually work part-time and want more hours was 270,800. Since this estimate is between 200,000 and 300,000, table T1 shows that the SE for Australia will lie between 6,250 and 7,250 and can be approximated by interpolation using the following general formula:

$$\begin{aligned}
 & SE \text{ of estimate (est.)} \\
 &= \text{lower SE} + \left(\left(\frac{\text{size of est.} - \text{lower est.}}{\text{upper est.} - \text{lower est.}} \right) \times (\text{upper SE} - \text{lower SE}) \right) \\
 &= 6,250 + \left(\left(\frac{270,800 - 200,000}{300,000 - 200,000} \right) \times (7,250 - 6,250) \right) \\
 &= 7,000 \text{ (rounded to the nearest 100)}
 \end{aligned}$$

4 Therefore, there are about two chances in three that the value that would have been produced if all dwellings had been included in the survey will fall within the range 263,800 to 277,800 and about 19 chances in 20 that the value will fall within the range 256,800 to 284,800. This example is illustrated in the diagram below.



5 In general, the size of the SE increases as the size of the estimate increases. Conversely, the RSE decreases as the size of the estimate increases. Very small estimates are thus subject to such high RSEs so that their value for most practical purposes is unreliable. In the tables in this publication, only estimates with RSEs of 25% or less are considered reliable for most purposes. Estimates with RSEs

CALCULATION OF STANDARD ERROR *continued*

greater than 25% but less than or equal to 50% are preceded by an asterisk (e.g. *3.4) to indicate they are subject to high SEs and should be used with caution. Estimates with RSEs of greater than 50%, preceded by a double asterisk (e.g. **0.3), are considered too unreliable for general use and should only be used to aggregate with other estimates to provide derived estimates with RSEs of less than 25%.

MEANS AND MEDIANS

6 The RSEs of estimates of mean duration of insufficient work, median duration of insufficient work and mean preferred number of extra hours are obtained by first finding the RSE of the estimate of the total number of persons contributing to the mean or median (see table T1) and then multiplying the resulting number by the following factors:

- mean duration of insufficient work: 1.7;
- median duration of insufficient work: 2.1; and
- mean preferred number of extra hours: 0.8.

7 The following is an example of the calculation of SEs where the use of a factor is required. Table 5 shows that the estimated number of male workers who usually work part-time and want more hours was 166,700 with a median duration of insufficient work of 26 weeks. The SE of 166,700 can be calculated from table T1 (by interpolation) as 5,800. To convert this to a RSE we express the SE as a percentage of the estimate or $5,800/166,700 = 3.5\%$. The RSE of the estimate of median duration of insufficient work is calculated by multiplying this number (3.5%) by the appropriate factor shown in the previous paragraph (in this case 2.1): $3.5 \times 2.1 = 7.4\%$. The SE of this estimate of median duration of insufficient work is therefore 7.4% of 26, i.e. about 2 (rounded to the nearest whole week). Therefore, there are two chances in three that the median duration of insufficient work for males that would have been obtained if all dwellings had been included in the survey would have been within the range 24–28 weeks, and about 19 chances in 20 that it would have been within the range 22–30 weeks.

8 Estimates of means and medians produced from population estimates smaller than the values provided in table T2 have RSEs larger than 25% and should be used with caution. Table T2 also indicates the size of population estimates that would produce means and medians with RSEs greater than 50%, which are considered too unreliable for general use.

9 An example of an estimate with a RSE between 25% and 50% is in table 6. The median duration of insufficient work for males with a bachelor degree, is 25 weeks and the number of persons contributing to the estimate is 11,100. Table T2 shows the level at which estimates of median duration have a RSE of 25% is 21,500. Therefore, the estimate of median duration has a high RSE and is shown in table 6 preceded with an asterisk (ie *25).

PROPORTIONS AND PERCENTAGES

10 Proportions and percentages formed from the ratio of two estimates are also subject to sampling errors. The size of the error depends on the accuracy of both the numerator and the denominator. A formula to approximate the RSE of a proportion is given below. This formula is only valid when x is a subset of y.

$$RSE\left(\frac{x}{y}\right) = \sqrt{[RSE(x)]^2 - [RSE(y)]^2}$$

11 Considering the example from paragraph 3, of the 270,800 females who usually work part-time and want more hours, 92,800 or 34.3% had insufficient work for more than a year. The SE of 92,800 may be calculated by interpolation as 4,700. To convert this to a RSE we express the SE as a percentage of the estimate, or $4,700/92,800 = 5.1\%$. The SE for 270,800 was calculated previously as 7,000,

PROPORTIONS AND
PERCENTAGES *continued*

which converted to a RSE is $7,000/270,800 = 2.6\%$. Applying the above formula, the RSE of the proportion is:

$$RSE = \sqrt{(5.1)^2 - (2.6)^2} = 4.4\%$$

12 Therefore, the SE for the proportion of females who have a current period of insufficient work of one year or more is 1.5 percentage points ($= (34.3/100) \times 4.4$). Therefore, there are about two chances in three that the proportion of females who have a current period of insufficient work of one year or more was between 32.8% and 35.8% and 19 chances in 20 that the proportion is within the range 31.3% to 37.3%.

DIFFERENCES

13 Published estimates may also be used to calculate the difference between two survey estimates (of numbers or percentages). Such an estimate is subject to sampling error. The sampling error of the difference between two estimates depends on their SEs and the relationship (correlation) between them. An approximate SE of the difference between two estimates ($x-y$) may be calculated by the following formula:

$$SE(x-y) = \sqrt{[SE(x)]^2 + [SE(y)]^2}$$

14 While this formula will only be exact for differences between separate and uncorrelated characteristics or subpopulations, it is expected to provide a good approximation for all differences likely to be of interest in this publication.

TECHNICAL NOTE DATA QUALITY *continued*

T1 STANDARD ERROR OF ESTIMATES

Size of estimate (persons)	AUSTRALIA									
	NSW	Vic.	Qld.	SA	WA	Tas.	NT	ACT	SE	RSE
	no.	no.	no.	no.	no.	no.	no.	no.	no.	%
100	90	100	180	160	160	110	110	130	80	80.0
200	160	170	260	220	220	140	150	160	140	70.0
300	220	230	310	260	260	170	170	180	190	63.3
500	330	320	390	320	340	210	210	220	270	54.0
700	420	400	460	370	390	240	240	240	350	50.0
1,000	530	500	540	420	460	280	280	270	440	44.0
1,500	690	630	650	500	550	330	330	310	580	38.7
2,000	820	750	740	570	620	370	370	350	700	35.0
2,500	950	850	800	600	700	400	400	400	800	32.0
3,000	1 050	950	900	650	750	450	450	400	900	30.0
3,500	1 150	1 000	950	700	800	450	450	450	1 000	28.6
4,000	1 250	1 100	1 000	750	850	500	500	450	1 050	26.3
5,000	1 400	1 200	1 100	850	900	550	500	500	1 200	24.0
7,000	1 650	1 400	1 300	950	1 050	600	600	550	1 450	20.7
10,000	1 950	1 700	1 500	1 100	1 200	700	700	650	1 750	17.5
15,000	2 350	2 000	1 800	1 300	1 450	800	800	750	2 150	14.3
20,000	2 700	2 250	2 050	1 450	1 600	900	900	850	2 450	12.3
30,000	3 150	2 650	2 450	1 700	1 850	1 050	1 000	1 000	2 950	9.8
40,000	3 500	2 900	2 750	1 900	2 100	1 200	1 150	1 100	3 350	8.4
50,000	3 800	3 150	3 000	2 100	2 250	1 300	1 200	1 250	3 700	7.4
100,000	4 750	4 000	4 000	2 750	2 900	1 700	1 550	1 650	4 850	4.9
150,000	5 350	4 600	4 750	3 250	3 350	1 950	1 800	2 000	5 600	3.7
200,000	5 900	5 150	5 300	3 650	3 750	2 150	..	2 300	6 250	3.1
300,000	6 900	6 100	6 250	4 300	4 300	2 500	..	2 750	7 250	2.4
500,000	8 550	7 700	7 650	5 250	5 050	3 050	8 800	1.8
1,000,000	11 950	10 800	10 050	6 850	6 350	11 550	1.2
2,000,000	17 600	15 650	13 100	9 000	7 800	15 250	0.8
5,000,000	31 550	26 900	18 450	23 400	0.5
10,000,000	40 950	0.4

.. not applicable

T2 LEVELS AT WHICH ESTIMATES HAVE RELATIVE STANDARD ERRORS OF 25% AND 50% (a)

	NSW	Vic.	Qld	SA	WA	Tas.	NT	ACT	Australia
	no.	no.	no.	no.	no.	no.	no.	no.	no.
25% RSE									
Mean duration of current period of insufficient work	13 670	12 313	8 250	5 822	6 251	2 939	3 515	1 109	14 331
Median duration of insufficient work	24 238	18 286	15 682	8 585	10 261	4 047	4 060	3 594	21 497
Mean preferred number of extra hours	3 889	3 473	3 134	1 966	2 937	1 004	638	455	3 021
All other estimates	6 245	4 689	4 100	2 469	2 937	1 206	1 199	1 145	4 574
50% RSE									
Mean duration of current period of insufficient work	3 338	3 255	2 374	1 790	1 883	918	1 127	392	3 116
Median duration of insufficient work	6 789	5 192	4 582	2 647	3 153	1 270	1 305	1 219	5 149
Mean preferred number of extra hours	592	677	881	599	857	308	198	165	368
All other estimates	1 182	996	1 160	754	857	371	377	404	682

(a) Refers to the number of persons contributing to the estimate.

GLOSSARY

Centrelink	A statutory authority responsible for delivering a range of Commonwealth government services, including registering persons for assistance in finding work and providing referrals to job placement agencies.
Duration of insufficient work	The duration of insufficient work is the length of time underemployed workers have been working less than 35 hours a week. As periods of insufficient work are recorded in full weeks and rounded down, this results in a slight understatement of duration.
Employed persons	Employed persons are all persons aged 15 years and over who, during the reference period: <ul style="list-style-type: none">■ worked for one hour or more for pay, profit, commission or payment in kind in a job or business, or on a farm (comprising employees, employers and own account workers); or■ worked for one hour or more without pay in a family business or on a farm (i.e. contributing family workers); or■ were employees who had a job but were not at work and were on paid leave, on leave without pay for less than four weeks up to the end of the reference week, stood down without pay because of bad weather or plant breakdown at their place of employment for less than four weeks up to the end of the reference week, on strike or locked out, on workers compensation and expecting to be returning to their job, or receiving wages or salary while undertaking full-time study; or■ were employers, own account workers or contributing workers who had a job, business or farm, but were not at work.
Full-time workers	Full-time workers are employed persons who usually worked 35 hours or more a week (in all jobs) and others who, although usually worked less than 35 hours, worked 35 hours or more during the reference week.
Fully employed workers	Fully employed persons are employed persons who: <ul style="list-style-type: none">■ usually work full-time and worked full-time hours in the reference week; or■ usually work full-time, but did not work full-time hours in the reference week for non-economic reasons; or■ worked part-time hours in the reference week and did not prefer to work more hours; or■ usually work part-time and prefer to work more hours, but worked full-time hours in the reference week.
Looking for work with more hours	Looked for work with more hours at some time during the four weeks up to the end of the reference week.
Main English-speaking countries	The main English-speaking countries are the United Kingdom, Ireland, Canada, South Africa, the United States of America and New Zealand.
Mean duration of insufficient work	The mean duration of insufficient work is obtained by dividing the aggregate number of weeks a group has had insufficient work by the number of persons in that group.
Mean preferred number of extra hours	The mean preferred number of extra hours is obtained by dividing the total preferred number of extra hours reported by a group by the number of persons in that group.
Median duration of insufficient work	The median duration of insufficient work is obtained by dividing underemployed workers into two equal groups, one comprising persons whose duration of insufficient work is above the median and the other, persons whose duration is below it.
Part-time workers	Employed persons who usually work less than 35 hours a week and who did so during the reference week.

GLOSSARY *continued*

Preferred number of extra hours	The number of extra hours a week an underemployed worker would have preferred to work.
Reference week	The week before the survey.
Relationship in household	Two or more related persons (relationship includes relationship by blood, marriage or adoption) usually resident in the same household at the time of the survey. A family comprises a married couple or a family head as defined, together with any persons having any of the following relationships to them: <ul style="list-style-type: none">■ sons or daughters of any age, if not married and with no children of their own present;■ other relatives if not accompanied by a spouse, sons or daughters, or parents of their own; or■ any children under 15 years of age who do not have a parent present.
Status in employment	Employed persons classified by whether they were employees, employers, own account workers, or contributing family workers.
Underemployment	Underemployment covers a range of employment situations which are characterised, at their broad level, where a worker: <ul style="list-style-type: none">■ worked part-time hours in the reference week and preferred to work more hours; or■ usually works full-time, but did not work full-time hours in the reference week for economic reasons.
Usual number of hours	The number of hours usually worked in a week.

FOR MORE INFORMATION...

- INTERNET* **www.abs.gov.au** the ABS web site is the best place to start for access to summary data from our latest publications, information about the ABS, advice about upcoming releases, our catalogue, and Australia Now—a statistical profile.
- LIBRARY* A range of ABS publications is available from public and tertiary libraries Australia-wide. Contact your nearest library to determine whether it has the ABS statistics you require, or visit our web site for a list of libraries.
- CPI INFOLINE* For current and historical Consumer Price Index data, call 1902 981 074 (call cost 77c per minute).
- DIAL-A-STATISTIC* For the latest figures for National Accounts, Balance of Payments, Labour Force, Average Weekly Earnings, Estimated Resident Population and the Consumer Price Index call 1900 986 400 (call cost 77c per minute).

INFORMATION SERVICE

Data which have been published and can be provided within five minutes are free of charge. Our information consultants can also help you to access the full range of ABS information—ABS user-pays services can be tailored to your needs, time frame and budget. Publications may be purchased. Specialists are on hand to help you with analytical or methodological advice.

- PHONE* **1300 135 070**
- EMAIL* **client.services@abs.gov.au**
- FAX* 1300 135 211
- POST* Client Services, ABS, GPO Box 796, Sydney 1041

WHY NOT SUBSCRIBE?

ABS subscription services provide regular, convenient and prompt deliveries of ABS publications and products as they are released. Email delivery of monthly and quarterly publications is available.

- PHONE* 1300 366 323
- EMAIL* subscriptions@abs.gov.au
- FAX* 03 9615 7848
- POST* Subscription Services, ABS, GPO Box 2796Y, Melbourne 3001



2626500009008
ISSN 1032-4941

RRP \$21.00

© Commonwealth of Australia 2001

Produced by the Australian Bureau of Statistics